

## Product datasheet for **TA358149**

### Ip6k1 Rabbit Polyclonal Antibody

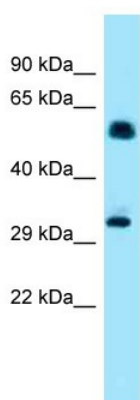
#### Product data:

Product Type:	Primary Antibodies
Applications:	WB
Reactivity:	Mouse
Host:	Rabbit
Clonality:	Polyclonal
Specificity:	<b>Expected reactivity:</b> Cow, Dog, Guinea Pig, Horse, Human, Mouse, Rabbit, Rat <b>Homology:</b> Cow: 100%; Dog: 86%; Guinea Pig: 100%; Horse: 100%; Human: 100%; Mouse: 100%; Rabbit: 93%; Rat: 100%
Formulation:	Liquid. Purified antibody supplied in 1x PBS buffer with 0.09% (w/v) sodium azide and 2% sucrose. <i>Note that this product is shipped as lyophilized powder to China customers.</i>
Concentration:	lot specific
Purification:	Affinity Purified
Conjugation:	Unconjugated
Storage:	For short term use, store at 2-8°C up to 1 week. For long term storage, store at -20°C in small aliquots to prevent freeze-thaw cycles.
Stability:	Shelf life: one year from despatch.
Predicted Protein Size:	49kDa
Gene Name:	inositol hexaphosphate kinase 1
Database Link:	<a href="#">NP_038813</a> <a href="#">Entrez Gene 27399 Mouse</a> <a href="#">Q6PD10</a>
Background:	Ip6k1 converts inositol hexakisphosphate (InsP6) to diphosphoinositol pentakisphosphate (InsP7/PP-InsP5) and converts 1,3,4,5,6-pentakisphosphate (InsP5) to PP-InsP4.
Synonyms:	IHPK1; KIAA0263; MGC9925; PiUS



[View online »](#)

Product images:



WB Suggested Anti-*Ip6k1* Antibody  
Titration: 1.0 ug/ml  
Positive Control: Mouse Heart