

Product datasheet for **TA358143**

TRY1 (PRSS58) Rabbit Polyclonal Antibody

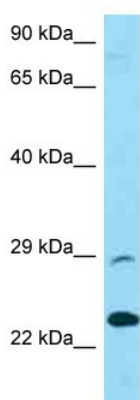
Product data:

| | |
|-------------------------|--|
| Product Type: | Primary Antibodies |
| Applications: | WB |
| Reactivity: | Human |
| Host: | Rabbit |
| Clonality: | Polyclonal |
| Specificity: | Expected reactivity: Horse, Human, Rabbit Homology: Horse: 79%; Human: 100%; Rabbit: 79% |
| Formulation: | Liquid. Purified antibody supplied in 1x PBS buffer with 0.09% (w/v) sodium azide and 2% sucrose. |
| Concentration: | lot specific |
| Purification: | Affinity Purified |
| Conjugation: | Unconjugated |
| Storage: | For short term use, store at 2-8°C up to 1 week. For long term storage, store at -20°C in small aliquots to prevent freeze-thaw cycles. |
| Stability: | Shelf life: one year from despatch. |
| Predicted Protein Size: | 27kDa |
| Gene Name: | protease, serine 58 |
| Database Link: | NP_001001317 Entrez Gene 136541 Human Q8IYP2 |
| Background: | This gene encodes a member of the trypsin family of serine proteases. This gene and several related trypsinogen genes are localized to the T cell receptor beta locus on chromosome 7. This gene was previously described as a trypsinogen-like pseudogene, but it is now thought to be a protein-coding gene. |
| Synonyms: | PRSS1; TRY1; TRYX3; UNQ2540 |
| Protein Families: | Druggable Genome |



[View online »](#)

Product images:



WB Suggested Anti-PRSS58 Antibody
Titration: 1.0 ug/ml
Positive Control: U937 Whole Cell