

Product datasheet for **TA358142**

MTG1 Rabbit Polyclonal Antibody

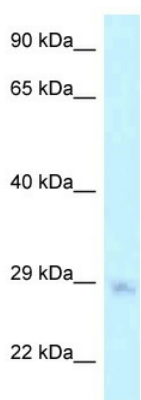
Product data:

Product Type:	Primary Antibodies
Applications:	WB
Reactivity:	Human
Host:	Rabbit
Clonality:	Polyclonal
Specificity:	Expected reactivity: Cow, Dog, Guinea Pig, Horse, Human, Mouse, Pig, Rabbit, Rat Homology: Cow: 100%; Dog: 100%; Guinea Pig: 79%; Horse: 100%; Human: 100%; Mouse: 86%; Pig: 100%; Rabbit: 100%; Rat: 86%
Formulation:	Liquid. Purified antibody supplied in 1x PBS buffer with 0.09% (w/v) sodium azide and 2% sucrose.
Concentration:	lot specific
Purification:	Affinity Purified
Conjugation:	Unconjugated
Storage:	For short term use, store at 2-8°C up to 1 week. For long term storage, store at -20°C in small aliquots to prevent freeze-thaw cycles.
Stability:	Shelf life: one year from despatch.
Predicted Protein Size:	29kDa
Gene Name:	mitochondrial ribosome associated GTPase 1
Database Link:	NP_612393 Entrez Gene 92170 Human Q9BT17-2
Background:	MTG1 is a mitochondrial GTPase. MTG1 may be involved in assembly of the large ribosomal subunit.
Synonyms:	GTP; GTPBP7; RP11-108K14.2



[View online »](#)

Product images:



WB Suggested Anti-MTG1 Antibody
 Titration: 1.0 ug/ml
 Positive Control: HepG2 Whole Cell
 MTG1 is supported by BioGPS gene expression data to be expressed in HepG2