

Product datasheet for **TA358141**

ILKAP Rabbit Polyclonal Antibody

Product data:

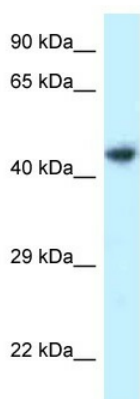
Product Type:	Primary Antibodies
Applications:	WB
Reactivity:	Human
Host:	Rabbit
Clonality:	Polyclonal
Specificity:	Expected reactivity: Cow, Dog, Guinea Pig, Horse, Human, Mouse, Rabbit, Rat Homology: Cow: 92%; Dog: 92%; Guinea Pig: 93%; Horse: 86%; Human: 100%; Mouse: 86%; Rabbit: 79%; Rat: 93%
Formulation:	Liquid. Purified antibody supplied in 1x PBS buffer with 0.09% (w/v) sodium azide and 2% sucrose. <i>Note that this product is shipped as lyophilized powder to China customers.</i>
Concentration:	lot specific
Purification:	Affinity Purified
Conjugation:	Unconjugated
Storage:	For short term use, store at 2-8°C up to 1 week. For long term storage, store at -20°C in small aliquots to prevent freeze-thaw cycles.
Stability:	Shelf life: one year from despatch.
Predicted Protein Size:	43kDa
Gene Name:	ILK associated serine/threonine phosphatase
Database Link:	NP_110395 Entrez Gene 80895 Human Q9H0C8
Background:	The protein encoded by this gene is a protein serine/threonine phosphatase of the PP2C family. This protein can interact with integrin-linked kinase (ILK/ILK1), a regulator of integrin mediated signaling, and regulate the kinase activity of ILK. Through the interaction with ILK, this protein may selectively affect the signaling process of ILK-mediated glycogen synthase kinase 3 beta (GSK3beta), and thus participate in Wnt signaling pathway.
Synonyms:	DKFZp434J2031; FLJ10181; MGC4846; PP2C-DELTA



[View online »](#)

Protein Families: Druggable Genome, Phosphatase

Product images:



WB Suggested Anti-ILKAP Antibody
Titration: 1.0 ug/ml
Positive Control: 721_B Whole Cell ILKAP is supported by BioGPS gene expression data to be expressed in 721_B