

Product datasheet for TA358132

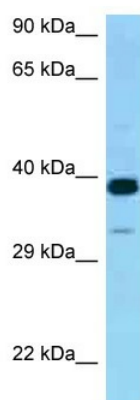
CRELD2 Rabbit Polyclonal Antibody

Product data:

Product Type:	Primary Antibodies
Applications:	WB
Reactivity:	Human
Host:	Rabbit
Clonality:	Polyclonal
Specificity:	Expected reactivity: Cow, Dog, Guinea Pig, Horse, Human, Mouse, Pig, Rat Homology: Cow: 79%; Dog: 86%; Guinea Pig: 86%; Horse: 100%; Human: 100%; Mouse: 93%; Pig: 100%; Rat: 93%
Formulation:	Liquid. Purified antibody supplied in 1x PBS buffer with 0.09% (w/v) sodium azide and 2% sucrose. <i>Note that this product is shipped as lyophilized powder to China customers.</i>
Concentration:	lot specific
Purification:	Affinity Purified
Conjugation:	Unconjugated
Storage:	For short term use, store at 2-8°C up to 1 week. For long term storage, store at -20°C in small aliquots to prevent freeze-thaw cycles.
Stability:	Shelf life: one year from despatch.
Predicted Protein Size:	39kDa
Gene Name:	cysteine rich with EGF like domains 2
Database Link:	NP_077300 Entrez Gene 79174 Human Q6UXH1
Background:	CRELD2 may regulate transport of alpha4-beta2 neuronal acetylcholine receptor.
Synonyms:	DKFZp667O055; MGC11256
Protein Families:	Druggable Genome, Secreted Protein



[View online »](#)

Product images:

WB Suggested Anti-CRELD2 Antibody
Titration: 1.0 ug/ml
Positive Control: 721_B Whole Cell
CRELD2 is supported by BioGPS gene expression data to be expressed in 721_B