

Product datasheet for **TA358130**

CALML3 Rabbit Polyclonal Antibody

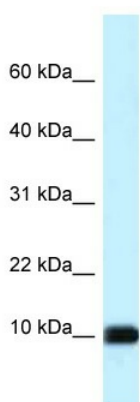
Product data:

Product Type:	Primary Antibodies
Applications:	WB
Reactivity:	Human
Host:	Rabbit
Clonality:	Polyclonal
Specificity:	Expected reactivity: Human, Pig, Rat, Yeast Homology: Human: 100%; Pig: 93%; Rat: 100%; Yeast: 93%
Formulation:	Liquid. Purified antibody supplied in 1x PBS buffer with 0.09% (w/v) sodium azide and 2% sucrose. <i>Note that this product is shipped as lyophilized powder to China customers.</i>
Concentration:	lot specific
Purification:	Affinity Purified
Conjugation:	Unconjugated
Storage:	For short term use, store at 2-8°C up to 1 week. For long term storage, store at -20°C in small aliquots to prevent freeze-thaw cycles.
Stability:	Shelf life: one year from despatch.
Predicted Protein Size:	16kDa
Gene Name:	calmodulin like 3
Database Link:	NP_005176 Entrez Gene 810 Human P27482
Background:	The function of this protein remains unknown.
Synonyms:	CLP
Protein Pathways:	Alzheimer's disease, Calcium signaling pathway, Glioma, GnRH signaling pathway, Insulin signaling pathway, Long-term potentiation, Melanogenesis, Neurotrophin signaling pathway, Olfactory transduction, Oocyte meiosis, Phosphatidylinositol signaling system, Vascular smooth muscle contraction

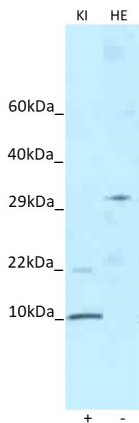


[View online »](#)

Product images:



WB Suggested Anti-CALML3 Antibody
 Titration: 1.0 ug/ml
 Positive Control: Hela Whole Cell



Host: Rabbit
 Target name: CALML3
 Positive control: ~25ug Human Kidney (KI)
 Negative control: ~25ug Human Fetal Heart (HE)
 Antibody concentration: 1ug/ml

Host: Rabbit
 Target: CALML3
 Positive control (+): Human Kidney (KI)
 Negative control (-): Human Fetal Heart (HE)
 Antibody concentration: 1ug/ml