

## Product datasheet for **TA358129**

### CFHL1 (CFHR1) Rabbit Polyclonal Antibody

#### Product data:

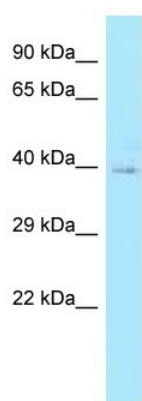
Product Type:	Primary Antibodies
Applications:	WB
Reactivity:	Human
Host:	Rabbit
Clonality:	Polyclonal
Specificity:	<b>Expected reactivity:</b> Human, Rat <b>Homology:</b> Human: 100%; Rat: 77%
Formulation:	Liquid. Purified antibody supplied in 1x PBS buffer with 0.09% (w/v) sodium azide and 2% sucrose. <i>Note that this product is shipped as lyophilized powder to China customers.</i>
Concentration:	lot specific
Purification:	Affinity Purified
Conjugation:	Unconjugated
Storage:	For short term use, store at 2-8°C up to 1 week. For long term storage, store at -20°C in small aliquots to prevent freeze-thaw cycles.
Stability:	Shelf life: one year from despatch.
Predicted Protein Size:	36kDa
Gene Name:	complement factor H related 1
Database Link:	<a href="#">NP_002104</a> <a href="#">Entrez Gene 3078 Human</a> <a href="#">Q03591</a>
Background:	This gene encodes a secreted protein belonging to the complement factor H protein family. It binds to Pseudomonas aeruginosa elongation factor Tuf together with plasminogen, which is proteolytically activated. It is proposed that Tuf acts as a virulence factor by acquiring host proteins to the pathogen surface, controlling complement, and facilitating tissue invasion. Mutations in this gene are associated with an increased risk of atypical hemolytic-uremic syndrome.
Synonyms:	CFHL; CFHL1; CFHL1P; CFHR1P; FHR-1; FHR1; H36; H36-1; H36-2; HFL1; HFL2; MGC104329



[View online »](#)

Protein Families: Secreted Protein

### Product images:



WB Suggested Anti-CFHR1 Antibody  
Titration: 1.0 ug/ml  
Positive Control: Hela Whole Cell