

Product datasheet for **TA358122**

G protein coupled receptor 30 (GPER1) Rabbit Polyclonal Antibody

Product data:

Product Type:	Primary Antibodies
Applications:	WB
Reactivity:	Human
Host:	Rabbit
Clonality:	Polyclonal
Specificity:	Expected reactivity: Dog, Guinea Pig, Horse, Human, Mouse, Rat Homology: Dog: 100%; Guinea Pig: 86%; Horse: 86%; Human: 100%; Mouse: 93%; Rat: 93%
Formulation:	Liquid. Purified antibody supplied in 1x PBS buffer with 0.09% (w/v) sodium azide and 2% sucrose. <i>Note that this product is shipped as lyophilized powder to China customers.</i>
Concentration:	lot specific
Purification:	Affinity Purified
Conjugation:	Unconjugated
Storage:	For short term use, store at 2-8°C up to 1 week. For long term storage, store at -20°C in small aliquots to prevent freeze-thaw cycles.
Stability:	Shelf life: one year from despatch.
Predicted Protein Size:	42kDa
Gene Name:	G protein-coupled estrogen receptor 1
Database Link:	NP_001091671 Entrez Gene 2852 Human Q99527
Background:	This gene is a member of the G-protein coupled receptor 1 family and encodes a multi-pass membrane protein that localizes to the endoplasmic reticulum. The protein binds estrogen, resulting in intracellular calcium mobilization and synthesis of phosphatidylinositol 3,4,5-trisphosphate in the nucleus. This protein therefore plays a role in the rapid nongenomic signaling events widely observed following stimulation of cells and tissues with estrogen. Alternate transcriptional splice variants which encode the same protein have been characterized.



[View online »](#)

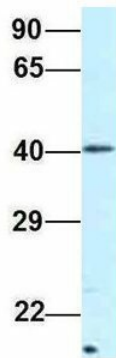
Protein Families: Druggable Genome, GPCR, Transmembrane

Product images:



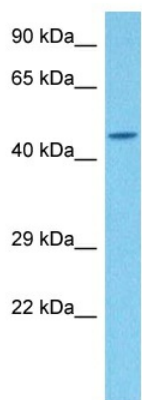
WB Suggested Anti-GPER Antibody
Titration: 1.0 ug/ml
Positive Control: Jurkat Whole Cell

GPER



Rabbit Anti-GPER
Sample Type: Human 721_B
Antibody Concentration: 1ug/mL

Host: Rabbit
Target Name: GPER
Sample Type: Human 721_B
Antibody Dilution: 1.0ug/ml
GPER1 is supported by BioGPS gene expression data to be expressed in 721_B



Host: Rabbit
Target Name: GPER
Sample Type: THP-1 Cell Lysate
Antibody Dilution: 1.0 μ g/ml

Host: Rabbit
Target Name: GPER
Sample Tissue: Human THP-1 Whole Cell
Antibody Dilution: 1 μ g/ml