

## Product datasheet for **TA358121**

### Faf2 Rabbit Polyclonal Antibody

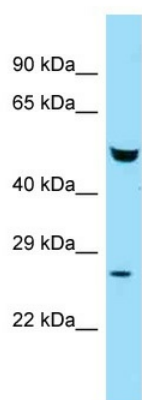
#### Product data:

|                         |   |
|-------------------------|---|
| Product Type:           | Primary Antibodies  |
| Applications:           | WB  |
| Reactivity:             | Mouse   |
| Host:                   | Rabbit  |
| Clonality:              | Polyclonal  |
| Specificity:            | <b>Expected reactivity:</b> Cow, Dog, Guinea Pig, Horse, Human, Mouse, Rabbit, Rat, Zebrafish<br><b>Homology:</b> Cow: 100%; Dog: 100%; Guinea Pig: 100%; Horse: 100%; Human: 100%; Mouse: 100%; Rabbit: 100%; Rat: 100%; Zebrafish: 100% |
| Formulation:            | Liquid. Purified antibody supplied in 1x PBS buffer with 0.09% (w/v) sodium azide and 2% sucrose.<br><i>Note that this product is shipped as lyophilized powder to China customers.</i>   |
| Concentration:          | lot specific  |
| Purification:           | Affinity Purified   |
| Conjugation:            | Unconjugated  |
| Storage:                | For short term use, store at 2-8°C up to 1 week. For long term storage, store at -20°C in small aliquots to prevent freeze-thaw cycles.   |
| Stability:              | Shelf life: one year from despatch.   |
| Predicted Protein Size: | 52kDa   |
| Gene Name:              | Fas associated factor family member 2   |
| Database Link:          | <a href="#">NP_848484</a><br><a href="#">Entrez Gene 76577 Mouse</a><br><a href="#">Q3TDN2</a>  |
| Background:             | Faf2 may play a role in the translocation of terminally misfolded proteins from the endoplasmic reticulum lumen to the cytoplasm and their degradation by the proteasome.   |
| Synonyms:               | ETEA; KIAA0887; UBXD8; UBXN3B   |



[View online »](#)

## Product images:



WB Suggested Anti-Faf2 Antibody  
Titration: 1.0 ug/ml  
Positive Control: Mouse Liver