

## Product datasheet for **TA358116**

### GCOM1 (POLR2M) Rabbit Polyclonal Antibody

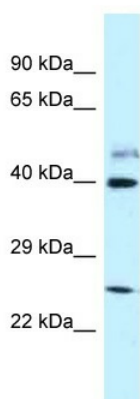
#### Product data:

Product Type:	Primary Antibodies
Applications:	WB
Reactivity:	Human
Host:	Rabbit
Clonality:	Polyclonal
Specificity:	<b>Expected reactivity:</b> Cow, Dog, Guinea Pig, Horse, Human, Mouse, Pig, Rabbit, Rat, Yeast <b>Homology:</b> Cow: 79%; Dog: 93%; Guinea Pig: 92%; Horse: 93%; Human: 100%; Mouse: 86%; Pig: 93%; Rabbit: 100%; Rat: 93%; Yeast: 80%
Formulation:	Liquid. Purified antibody supplied in 1x PBS buffer with 0.09% (w/v) sodium azide and 2% sucrose. <i>Note that this product is shipped as lyophilized powder to China customers.</i>
Concentration:	lot specific
Purification:	Affinity Purified
Conjugation:	Unconjugated
Storage:	For short term use, store at 2-8°C up to 1 week. For long term storage, store at -20°C in small aliquots to prevent freeze-thaw cycles.
Stability:	Shelf life: one year from despatch.
Predicted Protein Size:	40kDa
Gene Name:	polymerase (RNA) II subunit M
Database Link:	<a href="#">NP_056347</a> <a href="#">Entrez Gene 81488 Human</a> <a href="#">POCAP2</a>
Background:	This gene (GRINL1A) is part of a complex transcript unit that includes the gene for GRINL1A combined protein (Gcom1). Transcription of this gene occurs at a downstream promoter, with at least three different alternatively spliced variants, grouped together as Gdown for GRINL1A downstream transcripts. The Gcom1 gene uses an upstream promoter for transcription and also has multiple alternatively spliced variants.
Synonyms:	AA407243; AA408799; AI303746; AW553238; D9Wsu138e; Glurr; Grinl1a; mKIAA4185



[View online »](#)

Protein Families: Druggable Genome, Ion Channels: Other

**Product images:**

WB Suggested Anti-GRINL1A Antibody  
Titration: 1.0 ug/ml  
Positive Control: Fetal Lung