

Product datasheet for **TA358115**

SEMA6C Rabbit Polyclonal Antibody

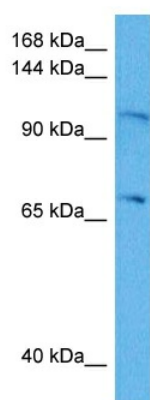
Product data:

Product Type:	Primary Antibodies
Applications:	WB
Reactivity:	Human
Host:	Rabbit
Clonality:	Polyclonal
Immunogen:	The immunogen is a synthetic peptide directed towards the C terminal region of human SEMA6C
Specificity:	Expected reactivity: Human
Formulation:	Liquid. Purified antibody supplied in 1x PBS buffer with 0.09% (w/v) sodium azide and 2% sucrose. <i>Note that this product is shipped as lyophilized powder to China customers.</i>
Concentration:	lot specific
Purification:	Affinity purified
Conjugation:	Unconjugated
Storage:	For short term use, store at 2-8°C up to 1 week. For long term storage, store at -20°C in small aliquots to prevent freeze-thaw cycles.
Stability:	Shelf life: one year from despatch.
Predicted Protein Size:	105 kDa
Gene Name:	semaphorin 6C
Database Link:	NP_001171532.1 Entrez Gene 10500 Human Q9H3T2-3
Background:	This gene encodes a member of the semaphorin family. Semaphorins represent important molecular signals controlling multiple aspects of the cellular response that follows CNS injury, and thus may play an important role in neural regeneration.
Synonyms:	KIAA1869; m-SemaY; m-SemaY2; OTTHUMP00000014157; Semaphorin-Y; SEMAY
Protein Pathways:	Axon guidance



[View online »](#)

Product images:



Host: Rabbit
Target Name: SEMA6C
Sample Type: HepG2 Cell Lysate
Antibody Dilution: 1.0 μ g/ml

Host: Rabbit
Target Name: SEMA6C
Sample Tissue: Human HepG2 Whole Cell lysates
Antibody Dilution: 1 μ g/ml