

Product datasheet for **TA358107**

GHDC Rabbit Polyclonal Antibody

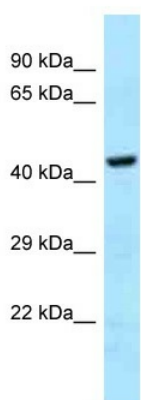
Product data:

Product Type:	Primary Antibodies
Applications:	WB
Reactivity:	Human
Host:	Rabbit
Clonality:	Polyclonal
Specificity:	Expected reactivity: Human Homology: Human: 100%
Formulation:	Liquid. Purified antibody supplied in 1x PBS buffer with 0.09% (w/v) sodium azide and 2% sucrose.
Concentration:	lot specific
Purification:	Affinity Purified
Conjugation:	Unconjugated
Storage:	For short term use, store at 2-8°C up to 1 week. For long term storage, store at -20°C in small aliquots to prevent freeze-thaw cycles.
Stability:	Shelf life: one year from despatch.
Predicted Protein Size:	52kDa
Gene Name:	GH3 domain containing
Database Link:	NP_001136095 Entrez Gene 84514 Human B3KVB0
Background:	The function of this protein remains unknown.
Synonyms:	D11LGP1; D11LGP1E; D11lgp1e-like; LGP1



[View online »](#)

Product images:



WB Suggested Anti-GHDC Antibody
Titration: 1.0 ug/ml
Positive Control: 721_B Whole Cell