

Product datasheet for **TA358106**

CHI3L2 Rabbit Polyclonal Antibody

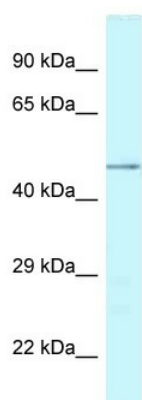
Product data:

Product Type:	Primary Antibodies
Applications:	WB
Reactivity:	Human
Host:	Rabbit
Clonality:	Polyclonal
Specificity:	Expected reactivity: Cow, Horse, Human, Pig, Rabbit Homology: Cow: 93%; Horse: 93%; Human: 100%; Pig: 92%; Rabbit: 93%
Formulation:	Liquid. Purified antibody supplied in 1x PBS buffer with 0.09% (w/v) sodium azide and 2% sucrose. <i>Note that this product is shipped as lyophilized powder to China customers.</i>
Concentration:	lot specific
Purification:	Affinity Purified
Conjugation:	Unconjugated
Storage:	For short term use, store at 2-8°C up to 1 week. For long term storage, store at -20°C in small aliquots to prevent freeze-thaw cycles.
Stability:	Shelf life: one year from despatch.
Predicted Protein Size:	43kDa
Gene Name:	chitinase 3 like 2
Database Link:	NP_003991 Entrez Gene 1117 Human Q15782
Background:	CHI3L2 may bind glycan structure with high affinity, but not heparin. It has no chitotriosidase activity.
Synonyms:	YKL-39; YKL39



[View online »](#)

Product images:



WB Suggested Anti-CHI3L2 Antibody
Titration: 1.0 ug/ml
Positive Control: Fetal Brain