

Product datasheet for **TA358104**

CENTB1 (ACAP1) Rabbit Polyclonal Antibody

Product data:

Product Type:	Primary Antibodies
Applications:	WB
Reactivity:	Human
Host:	Rabbit
Clonality:	Polyclonal
Immunogen:	The immunogen is a synthetic peptide directed towards the C terminal region of human ACAP1
Specificity:	Expected reactivity: Human Homology: Cow: 100%; Dog: 100%; Guinea Pig: 100%; Horse: 100%; Human: 100%; Mouse: 100%; Rabbit: 100%; Rat: 100%; Zebrafish: 77%
Formulation:	Liquid. Purified antibody supplied in 1x PBS buffer with 0.09% (w/v) sodium azide and 2% sucrose. <i>Note that this product is shipped as lyophilized powder to China customers.</i>
Concentration:	lot specific
Purification:	Affinity purified
Conjugation:	Unconjugated
Storage:	For short term use, store at 2-8°C up to 1 week. For long term storage, store at -20°C in small aliquots to prevent freeze-thaw cycles.
Stability:	Shelf life: one year from despatch.
Predicted Protein Size:	81 kDa
Gene Name:	ArfGAP with coiled-coil, ankyrin repeat and PH domains 1
Database Link:	NP_055531 Entrez Gene 9744 Human Q15027
Background:	GTPase-activating protein (GAP) for ADP ribosylation factor 6 (ARF6) required for clathrin-dependent export of proteins from recycling endosomes to trans-Golgi network and cell surface. Required for regulated export of ITGB1 from recycling endosomes to the cell surface and ITGB1-dependent cell migration.

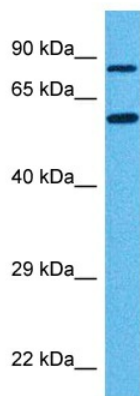


[View online »](#)

Synonyms: Centaurin-beta-1; CENTB1; Cnt-b1; KIAA0050

Protein Pathways: Endocytosis

Product images:



Host: Rabbit
Target Name: ACAP1
Sample Type: Lymph Node Tumor Lysate
Antibody Dilution: 1.0 μ g/ml

Host: Rabbit
Target Name: ACAP1
Sample Tissue: Human Lymph Node Tumor lysates
Antibody Dilution: 1 μ g/ml