

## Product datasheet for **TA358097**

### Repulsive Guidance Molecule B (RGMB) Rabbit Polyclonal Antibody

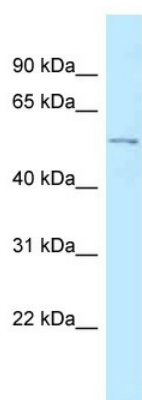
#### Product data:

Product Type:	Primary Antibodies
Applications:	WB
Reactivity:	Human
Host:	Rabbit
Clonality:	Polyclonal
Specificity:	<b>Expected reactivity:</b> Human <b>Homology:</b> Human: 100%
Formulation:	Liquid. Purified antibody supplied in 1x PBS buffer with 0.09% (w/v) sodium azide and 2% sucrose.
Concentration:	lot specific
Purification:	Affinity Purified
Conjugation:	Unconjugated
Storage:	For short term use, store at 2-8°C up to 1 week. For long term storage, store at -20°C in small aliquots to prevent freeze-thaw cycles.
Stability:	Shelf life: one year from despatch.
Predicted Protein Size:	53kDa
Gene Name:	repulsive guidance molecule family member b
Database Link:	<a href="#">NP_001012779</a> <a href="#">Entrez Gene 285704 Human</a> <a href="#">Q6NW40</a>
Background:	RGMB is a glycosylphosphatidylinositol (GPI)-anchored member of the repulsive guidance molecule family and contributes to the patterning of the developing nervous system.
Synonyms:	DKFZp434P228; DRAGON; FLJ90406; MGC86970



[View online »](#)

## Product images:



WB Suggested Anti-RGMB Antibody  
Titration: 1.0 ug/ml  
Positive Control: HCT15 Whole Cell