

## Product datasheet for **TA358093**

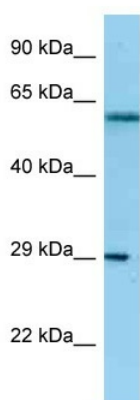
### NSL1 Rabbit Polyclonal Antibody

#### Product data:

Product Type:	Primary Antibodies
Applications:	WB
Reactivity:	Human
Host:	Rabbit
Clonality:	Polyclonal
Specificity:	<b>Expected reactivity:</b> Cow, Human <b>Homology:</b> Cow: 79%; Human: 100%
Formulation:	Liquid. Purified antibody supplied in 1x PBS buffer with 0.09% (w/v) sodium azide and 2% sucrose.
Concentration:	lot specific
Purification:	Affinity Purified
Conjugation:	Unconjugated
Storage:	For short term use, store at 2-8°C up to 1 week. For long term storage, store at -20°C in small aliquots to prevent freeze-thaw cycles.
Stability:	Shelf life: one year from despatch.
Predicted Protein Size:	31kDa
Gene Name:	NSL1, MIS12 kinetochore complex component
Database Link:	<a href="#">NP_056286</a> <a href="#">Entrez Gene 25936 Human</a> <a href="#">Q96IY1</a>
Background:	This gene encodes a protein with two coiled-coil domains that localizes to kinetochores, which are chromosome-associated structures that attach to microtubules and mediate chromosome movements during cell division. The encoded protein is part of a conserved protein complex that includes two chromodomain-containing proteins and a component of the outer plate of the kinetochore. This protein complex is proposed to bridge centromeric heterochromatin with the outer kinetochore structure. Multiple transcript variants encoding different isoforms have been found for this gene.
Synonyms:	C1orf48; DC8; DKFZP566O1646; MIS14



[View online »](#)

**Product images:**

WB Suggested Anti-NSL1 Antibody  
Titration: 1.0 ug/ml  
Positive Control: HeLa Whole Cell/NSL1 is supported by BioGPS gene expression data to be expressed in HeLa