

Product datasheet for **TA358085**

CCRK (CDK20) Rabbit Polyclonal Antibody

Product data:

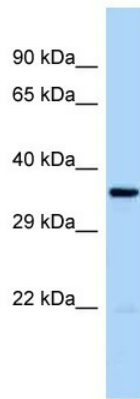
Product Type:	Primary Antibodies
Applications:	WB
Reactivity:	Human
Host:	Rabbit
Clonality:	Polyclonal
Specificity:	Expected reactivity: Cow, Dog, Guinea Pig, Horse, Human, Mouse, Rabbit, Rat, Yeast, Zebrafish Homology: Cow: 93%; Dog: 93%; Guinea Pig: 93%; Horse: 93%; Human: 100%; Mouse: 93%; Rabbit: 93%; Rat: 93%; Yeast: 79%; Zebrafish: 92%
Formulation:	Liquid. Purified antibody supplied in 1x PBS buffer with 0.09% (w/v) sodium azide and 2% sucrose. <i>Note that this product is shipped as lyophilized powder to China customers.</i>
Concentration:	lot specific
Purification:	Affinity Purified
Conjugation:	Unconjugated
Storage:	For short term use, store at 2-8°C up to 1 week. For long term storage, store at -20°C in small aliquots to prevent freeze-thaw cycles.
Stability:	Shelf life: one year from despatch.
Predicted Protein Size:	37kDa
Gene Name:	cyclin-dependent kinase 20
Database Link:	NP_848519 Entrez Gene 23552 Human A2A390
Background:	The protein encoded by this gene contains a kinase domain most closely related to the cyclin-dependent protein kinases. The encoded kinase may activate cyclin-dependent kinase 2 and is involved in cell growth. Alternatively spliced transcript variants encoding distinct isoforms have been reported.
Synonyms:	CCRK; CDCH; P42; PNQALRE



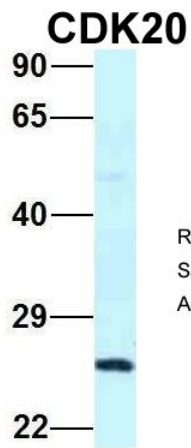
[View online »](#)

Protein Families: Druggable Genome, Protein Kinase

Product images:



WB Suggested Anti-CDK20 Antibody
Titration: 1.0 ug/ml
Positive Control: RPMI-8226 Whole Cell



Rabbit Anti-CDK20
Sample Type: Human 293T
Antibody Concentration: 1ug/mL

Host: Rabbit
Target Name: CDK20
Sample Type: 293T
Antibody Dilution: 1.0ug/ml
CDK20 is supported by BioGPS gene expression data to be expressed in HEK293T