

Product datasheet for **TA358080**

MRPL19 Rabbit Polyclonal Antibody

Product data:

Product Type:	Primary Antibodies
Applications:	IP, WB
Reactivity:	Human
Host:	Rabbit
Clonality:	Polyclonal
Specificity:	Expected reactivity: Cow, Dog, Horse, Human, Mouse, Pig, Rabbit, Rat Homology: Cow: 86%; Dog: 86%; Horse: 86%; Human: 100%; Mouse: 79%; Pig: 92%; Rabbit: 85%; Rat: 79%
Formulation:	Liquid. Purified antibody supplied in 1x PBS buffer with 0.09% (w/v) sodium azide and 2% sucrose. <i>Note that this product is shipped as lyophilized powder to China customers.</i>
Concentration:	lot specific
Purification:	Affinity Purified
Conjugation:	Unconjugated
Storage:	For short term use, store at 2-8°C up to 1 week. For long term storage, store at -20°C in small aliquots to prevent freeze-thaw cycles.
Stability:	Shelf life: one year from despatch.
Predicted Protein Size:	33kDa
Gene Name:	mitochondrial ribosomal protein L19
Database Link:	NP_055578 Entrez Gene 9801 Human P49406



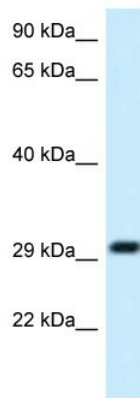
[View online »](#)

Background:

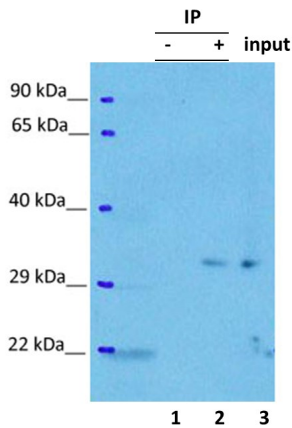
Mammalian mitochondrial ribosomal proteins are encoded by nuclear genes and help in protein synthesis within the mitochondrion. Mitochondrial ribosomes (mitoribosomes) consist of a small 28S subunit and a large 39S subunit. They have an estimated 75% protein to rRNA composition compared to prokaryotic ribosomes, where this ratio is reversed. Another difference between mammalian mitoribosomes and prokaryotic ribosomes is that the latter contain a 5S rRNA. Among different species, the proteins comprising the mitoribosome differ greatly in sequence, and sometimes in biochemical properties, which prevents easy recognition by sequence homology. This gene encodes a 39S subunit protein.

Synonyms:

KIAA0104; L19mt; MGC20675; MRP-L15; MRP-L19; MRPL15; OTTHUMP00000202782; RLX1; RPML15

Product images:


WB Suggested Anti-MRPL19 Antibody
Titration: 1.0 ug/ml
Positive Control: Fetal Liver



Lysate: HEK293 2mg
IP: MRPL19 2ug
Detection: MRPL19 3ug/ml

MRPL19 was immunoprecipitated from 2 mg HEK293 Whole Cell Lysate with TA358080 with 1:200 dilution. Western blot was performed using TA358080 at 1/1000 dilution.
Lane 1: Control IP in HEK293 Whole Cell Lysate.
Lane 2: MRPL19 IP with TA358080 in HEK293 Whole Cell Lysate.
Lane 3: Input of HEK293 Whole Cell Lysate.