

Product datasheet for **TA358075**

MED18 Rabbit Polyclonal Antibody

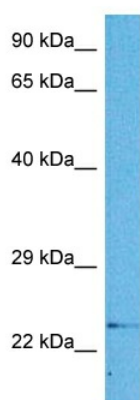
Product data:

Product Type:	Primary Antibodies
Applications:	WB
Reactivity:	Human
Host:	Rabbit
Clonality:	Polyclonal
Immunogen:	The immunogen is a synthetic peptide directed towards the C terminal region of human MED18
Specificity:	Expected reactivity: Human Homology: Cow: 93%; Dog: 100%; Guinea Pig: 100%; Horse: 93%; Human: 100%; Mouse: 100%; Rabbit: 93%; Rat: 100%; Zebrafish: 86%
Formulation:	Liquid. Purified antibody supplied in 1x PBS buffer with 0.09% (w/v) sodium azide and 2% sucrose. <i>Note that this product is shipped as lyophilized powder to China customers.</i>
Concentration:	lot specific
Purification:	Affinity purified
Conjugation:	Unconjugated
Storage:	For short term use, store at 2-8°C up to 1 week. For long term storage, store at -20°C in small aliquots to prevent freeze-thaw cycles.
Stability:	Shelf life: one year from despatch.
Predicted Protein Size:	22 kDa
Gene Name:	mediator complex subunit 18
Database Link:	NP_060108.2 Entrez Gene 54797 Human Q9BUE0
Background:	MED18 is a component of the Mediator complex, which is a coactivator for DNA-binding factors that activate transcription via RNA polymerase II.
Synonyms:	FLJ20045; p28b



[View online »](#)

Product images:



Host: Rabbit
Target Name: MED18
Sample Type: Lung Tumor Lysate
Antibody Dilution: 1.0µg/ml

Host: Rabbit
Target Name: MED18
Sample Tissue: Human Lung Tumor lysates
Antibody Dilution: 1ug/ml