

Product datasheet for **TA358063**

CHMP2A Rabbit Polyclonal Antibody

Product data:

Product Type:	Primary Antibodies
Applications:	WB
Reactivity:	Human
Host:	Rabbit
Clonality:	Polyclonal
Specificity:	Expected reactivity: Cow, Dog, Guinea Pig, Horse, Human, Mouse, Rabbit, Rat, Zebrafish Homology: Cow: 100%; Dog: 93%; Guinea Pig: 100%; Horse: 93%; Human: 100%; Mouse: 100%; Rabbit: 100%; Rat: 100%; Zebrafish: 92%
Formulation:	Liquid. Purified antibody supplied in 1x PBS buffer with 0.09% (w/v) sodium azide and 2% sucrose. <i>Note that this product is shipped as lyophilized powder to China customers.</i>
Concentration:	lot specific
Purification:	Affinity Purified
Conjugation:	Unconjugated
Storage:	For short term use, store at 2-8°C up to 1 week. For long term storage, store at -20°C in small aliquots to prevent freeze-thaw cycles.
Stability:	Shelf life: one year from despatch.
Predicted Protein Size:	24kDa
Gene Name:	charged multivesicular body protein 2A
Database Link:	NP_055268 Entrez Gene 27243 Human O43633
Background:	CHMP2A belongs to the chromatin-modifying protein/charged multivesicular body protein (CHMP) family. These proteins are components of ESCRT-III (endosomal sorting complex required for transport III), a complex involved in degradation of surface receptor proteins and formation of endocytic multivesicular bodies (MVBs). Some CHMPs have both nuclear and cytoplasmic/vesicular distributions, and one such CHMP, CHMP1A (MIM 164010), is required for both MVB formation and regulation of cell cycle progression.



[View online »](#)

Synonyms: BC-2; BC2; CHMP2; hVps2-1; VPS2; Vps2-1; VPS2A

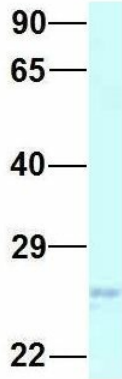
Protein Pathways: Endocytosis

Product images:



WB Suggested Anti-CHMP2A Antibody
Titration: 1.0 ug/ml
Positive Control: 293T Whole Cell

CHMP2A



Rabbit Anti-CHMP2A
Sample Type: Human 721_B
Antibody Concentration: 1ug/mL

Host: Rabbit
Target Name: CHMP2A
Sample Type: 721_B
Antibody Dilution: 1.0ug/ml
CHMP2A is supported by BioGPS gene expression data to be expressed in 721_B