

## Product datasheet for **TA358058**

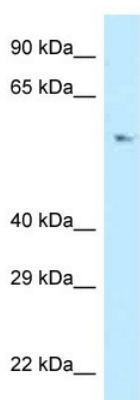
### **POLD3 Rabbit Polyclonal Antibody**

#### **Product data:**

Product Type:	Primary Antibodies
Applications:	WB
Reactivity:	Human
Host:	Rabbit
Clonality:	Polyclonal
Specificity:	<b>Expected reactivity:</b> Cow, Dog, Guinea Pig, Horse, Human, Mouse, Pig, Rabbit, Rat <b>Homology:</b> Cow: 93%; Dog: 93%; Guinea Pig: 79%; Horse: 86%; Human: 100%; Mouse: 93%; Pig: 86%; Rabbit: 93%; Rat: 93%
Formulation:	Liquid. Purified antibody supplied in 1x PBS buffer with 0.09% (w/v) sodium azide and 2% sucrose. <i>Note that this product is shipped as lyophilized powder to China customers.</i>
Concentration:	lot specific
Purification:	Affinity Purified
Conjugation:	Unconjugated
Storage:	For short term use, store at 2-8°C up to 1 week. For long term storage, store at -20°C in small aliquots to prevent freeze-thaw cycles.
Stability:	Shelf life: one year from despatch.
Predicted Protein Size:	51kDa
Gene Name:	polymerase (DNA) delta 3, accessory subunit
Database Link:	<a href="#">NP_006582</a> <a href="#">Entrez Gene 10714 Human</a> <a href="#">Q15054</a>
Background:	The DNA polymerase delta complex is involved in DNA replication and repair, and it consists of the proliferating cell nuclear antigen, the multisubunit replication factor C, and the 4 subunit polymerase complex: POLD1, POLD2, POLD3, and POLD4.
Synonyms:	KIAA0039; MGC119642; MGC119643; P66; P68
Protein Pathways:	Base excision repair, DNA replication, Homologous recombination, Metabolic pathways, Mismatch repair, Nucleotide excision repair, Purine metabolism, Pyrimidine metabolism



[View online »](#)

**Product images:**

WB Suggested Anti-POLD3 Antibody  
Titration: 1.0 ug/ml  
Positive Control: Jurkat Whole Cell POLD3 is supported by BioGPS gene expression data to be expressed in Jurkat