

Product datasheet for **TA358054**

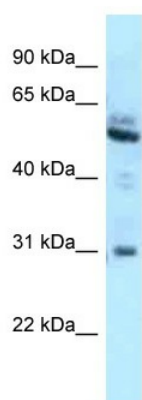
Jaw1 (LRMP) Rabbit Polyclonal Antibody

Product data:

Product Type:	Primary Antibodies
Applications:	WB
Reactivity:	Human
Host:	Rabbit
Clonality:	Polyclonal
Specificity:	Expected reactivity: Cow, Dog, Guinea Pig, Horse, Human, Rabbit Homology: Cow: 79%; Dog: 86%; Guinea Pig: 83%; Horse: 86%; Human: 100%; Rabbit: 85%
Formulation:	Liquid. Purified antibody supplied in 1x PBS buffer with 0.09% (w/v) sodium azide and 2% sucrose. <i>Note that this product is shipped as lyophilized powder to China customers.</i>
Concentration:	lot specific
Purification:	Affinity Purified
Conjugation:	Unconjugated
Storage:	For short term use, store at 2-8°C up to 1 week. For long term storage, store at -20°C in small aliquots to prevent freeze-thaw cycles.
Stability:	Shelf life: one year from despatch.
Predicted Protein Size:	55kDa
Gene Name:	lymphoid restricted membrane protein
Database Link:	NP_006143 Entrez Gene 4033 Human Q12912-2
Background:	The protein encoded by this gene is expressed in a developmentally regulated manner in lymphoid cell lines and tissues. The protein is localized to the cytoplasmic face of the endoplasmic reticulum.
Synonyms:	JAW1
Protein Families:	Transmembrane



[View online »](#)

Product images:

WB Suggested Anti-LRMP Antibody
Titration: 1.0 ug/ml
Positive Control: A549 Whole Cell