

Product datasheet for TA358045

Cul4b Rabbit Polyclonal Antibody

Product data:

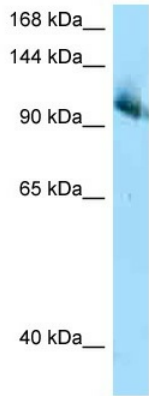
Product Type:	Primary Antibodies
Applications:	WB
Reactivity:	Human, Mouse
Host:	Rabbit
Clonality:	Polyclonal
Specificity:	Expected reactivity: Cow, Dog, Goat, Guinea Pig, Horse, Human, Mouse, Rabbit, Rat, Zebrafish Homology: Cow: 100%; Dog: 100%; Goat: 86%; Guinea Pig: 100%; Horse: 100%; Human: 100%; Mouse: 100%; Rabbit: 100%; Rat: 100%; Zebrafish: 100%
Formulation:	Liquid. Purified antibody supplied in 1x PBS buffer with 0.09% (w/v) sodium azide and 2% sucrose. <i>Note that this product is shipped as lyophilized powder to China customers.</i>
Concentration:	lot specific
Purification:	Affinity Purified
Conjugation:	Unconjugated
Storage:	For short term use, store at 2-8°C up to 1 week. For long term storage, store at -20°C in small aliquots to prevent freeze-thaw cycles.
Stability:	Shelf life: one year from despatch.
Predicted Protein Size:	111kDa
Gene Name:	cullin 4B
Database Link:	NP_001103612 Entrez Gene 8450 Human Entrez Gene 72584 Mouse A2A432
Background:	Cul4b is a core component of multiple cullin-RING-based E3 ubiquitin-protein ligase complexes which mediate the ubiquitination and subsequent proteasomal degradation of target proteins. The functional specificity of the E3 ubiquitin-protein ligase complex depends on the variable substrate recognition subunit. CUL4B may act within the complex as a scaffold protein, contributing to catalysis through positioning of the substrate and the ubiquitin-conjugating enzyme.



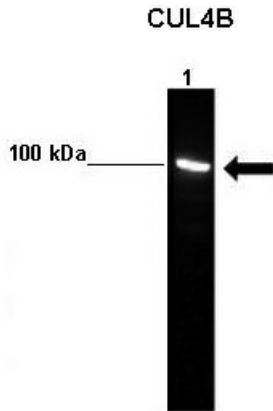
[View online »](#)

Synonyms: CUL-4B; cullin-4B; DKFZp686F1470; KIAA0695; MRXHF2; MRXSC; SFM2

Product images:



WB Suggested Anti-Cul4b Antibody
Titration: 1.0 ug/ml
Positive Control: Mouse Heart



WB Suggested Anti-Cul4b Antibody
Positive Control: Lane 1: 50ug 293T lysate Lane 2:
50ug hCUL4B transfected 293T lysate
Primary Antibody Dilution : 1:1000
Secondary Antibody : Anti-rabbit-HRP
Secondary Antibody Dilution : 1:10,000
Submitted by: Mei Yang