

## Product datasheet for **TA358026**

### DUSP9 Rabbit Polyclonal Antibody

#### Product data:

|                         |                                                                                                                                                                                         |
|-------------------------|-----------------------------------------------------------------------------------------------------------------------------------------------------------------------------------------|
| Product Type:           | Primary Antibodies                                                                                                                                                                      |
| Applications:           | WB                                                                                                                                                                                      |
| Reactivity:             | Human                                                                                                                                                                                   |
| Host:                   | Rabbit                                                                                                                                                                                  |
| Clonality:              | Polyclonal                                                                                                                                                                              |
| Specificity:            | <b>Expected reactivity:</b> Horse, Human<br><b>Homology:</b> Horse: 77%; Human: 100%                                                                                                    |
| Formulation:            | Liquid. Purified antibody supplied in 1x PBS buffer with 0.09% (w/v) sodium azide and 2% sucrose.<br><i>Note that this product is shipped as lyophilized powder to China customers.</i> |
| Concentration:          | lot specific                                                                                                                                                                            |
| Purification:           | Affinity Purified                                                                                                                                                                       |
| Conjugation:            | Unconjugated                                                                                                                                                                            |
| Storage:                | For short term use, store at 2-8°C up to 1 week. For long term storage, store at -20°C in small aliquots to prevent freeze-thaw cycles.                                                 |
| Stability:              | Shelf life: one year from despatch.                                                                                                                                                     |
| Predicted Protein Size: | 41kDa                                                                                                                                                                                   |
| Gene Name:              | dual specificity phosphatase 9                                                                                                                                                          |
| Database Link:          | <a href="#">NP_001386</a><br><a href="#">Entrez Gene 1852 Human</a><br><a href="#">Q99956</a>                                                                                           |



[View online »](#)

**Background:**

The protein encoded by this gene is a member of the dual specificity protein phosphatase subfamily. These phosphatases inactivate their target kinases by dephosphorylating both the phosphoserine/threonine and phosphotyrosine residues. They negatively regulate members of the mitogen-activated protein (MAP) kinase superfamily (MAPK/ERK, SAPK/JNK, p38), which is associated with cellular proliferation and differentiation. Different members of the family of dual specificity phosphatases show distinct substrate specificities for various MAP kinases, different tissue distribution and subcellular localization, and different modes of inducibility of their expression by extracellular stimuli. This gene product shows selectivity for members of the ERK family of MAP kinases, is expressed only in placenta, kidney, and fetal liver, and is localized to the cytoplasm and nucleus.

**Synonyms:**

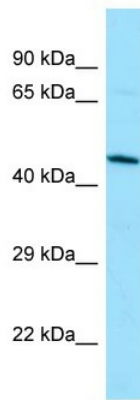
MKP-4; MKP4; OTTHUMP00000025953

**Protein Families:**

Phosphatase

**Protein Pathways:**

MAPK signaling pathway

**Product images:**

WB Suggested Anti-DUSP9 Antibody  
Titration: 1.0 ug/ml  
Positive Control: Jurkat Whole Cell