

Product datasheet for **TA358022**

RAB31 Rabbit Polyclonal Antibody

Product data:

Product Type:	Primary Antibodies
Applications:	WB
Reactivity:	Human
Host:	Rabbit
Clonality:	Polyclonal
Specificity:	Expected reactivity: Cow, Dog, Guinea Pig, Horse, Human, Mouse, Rabbit, Rat Homology: Cow: 100%; Dog: 100%; Guinea Pig: 93%; Horse: 100%; Human: 100%; Mouse: 100%; Rabbit: 100%; Rat: 100%
Formulation:	Liquid. Purified antibody supplied in 1x PBS buffer with 0.09% (w/v) sodium azide and 2% sucrose. <i>Note that this product is shipped as lyophilized powder to China customers.</i>
Concentration:	lot specific
Purification:	Affinity Purified
Conjugation:	Unconjugated
Storage:	For short term use, store at 2-8°C up to 1 week. For long term storage, store at -20°C in small aliquots to prevent freeze-thaw cycles.
Stability:	Shelf life: one year from despatch.
Predicted Protein Size:	21kDa
Gene Name:	RAB31, member RAS oncogene family
Database Link:	NP_006859 Entrez Gene 11031 Human Q53EY4
Background:	Small GTP-binding proteins of the RAB family, such as RAB31, play essential roles in vesicle and granule targeting.
Synonyms:	Rab-22B; Rab22B
Protein Families:	Druggable Genome
Protein Pathways:	Endocytosis

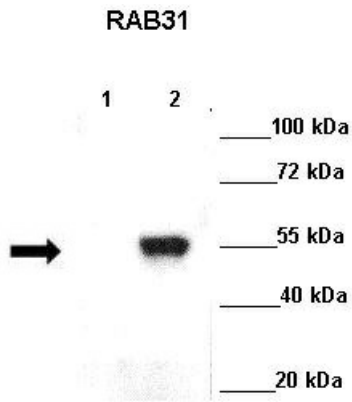


[View online »](#)

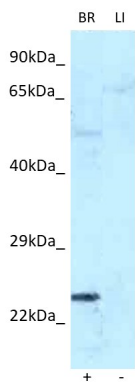
Product images:



WB Suggested Anti-RAB31 Antibody
Titration: 1.0 ug/ml
Positive Control: Fetal Brain



Lane 1: GFP-Rab5 transfected cos cells
Lane 2: GFP-Rab31 transfected cos cells
Primary Antibody Dilution: 1:500
Secondary Antibody: Goat anti rabbit-HRP
Secondary Antibody Dilution: 1:5000
Gene Name: RAB31
Submitted by: Ruth Herbst, Medical University Vienna



Host: Rabbit
Target Name: RAB31
Positive Control: ~25ug Human Brain (BR)
Negative Control: ~25ug Human Liver (LI)
Antibody Concentration: 1ug/ml

Host: Rabbit
Target: RAB31
Positive control (+): Human Brain (BR)
Negative control (-): Human Liver (LI)
Antibody concentration: 1ug/ml