

Product datasheet for TA358020

SSBP1 Rabbit Polyclonal Antibody

Product data:

Product Type:	Primary Antibodies
Applications:	WB
Reactivity:	Human
Host:	Rabbit
Clonality:	Polyclonal
Specificity:	Expected reactivity: Cow, Dog, Guinea Pig, Horse, Human, Mouse, Rabbit, Rat, Sheep, Zebrafish Homology: Cow: 93%; Dog: 93%; Guinea Pig: 93%; Horse: 93%; Human: 100%; Mouse: 93%; Rabbit: 93%; Rat: 93%; Sheep: 93%; Zebrafish: 86%
Formulation:	Liquid. Purified antibody supplied in 1x PBS buffer with 0.09% (w/v) sodium azide and 2% sucrose. <i>Note that this product is shipped as lyophilized powder to China customers.</i>
Concentration:	lot specific
Purification:	Affinity Purified
Conjugation:	Unconjugated
Storage:	For short term use, store at 2-8°C up to 1 week. For long term storage, store at -20°C in small aliquots to prevent freeze-thaw cycles.
Stability:	Shelf life: one year from despatch.
Predicted Protein Size:	16kDa
Gene Name:	single stranded DNA binding protein 1
Database Link:	NP_003134 Entrez Gene 6742 Human Q04837
Background:	SSBP1 is a housekeeping gene involved in mitochondrial biogenesis. It is also a subunit of a single-stranded DNA (ssDNA)-binding complex involved in the maintenance of genome stability.
Synonyms:	Mt-SSB; MtSSB; SOSS-B1; SSBP
Protein Families:	Druggable Genome



[View online »](#)

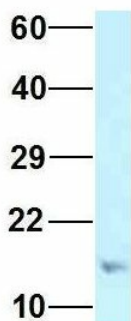
Protein Pathways: DNA replication, Homologous recombination, Mismatch repair

Product images:



WB Suggested Anti-SSBP1 Antibody
Titration: 1.0 ug/ml
Positive Control: Fetal Kidney

SSBP1



Rabbit Anti-SSBP1
Sample Type: Human Fetal Heart
Antibody Concentration: 1ug/mL

Host: Rabbit
Target Name: SSBP1
Sample Type: Human Fetal Heart
Antibody Dilution: 1.0ug/ml