

## Product datasheet for **TA358016**

### PPP1R3B Rabbit Polyclonal Antibody

#### Product data:

|                         |   |
|-------------------------|---|
| Product Type:           | Primary Antibodies  |
| Applications:           | WB  |
| Reactivity:             | Human   |
| Host:                   | Rabbit  |
| Clonality:              | Polyclonal  |
| Specificity:            | <b>Expected reactivity:</b> Cow, Dog, Goat, Guinea Pig, Horse, Human, Mouse, Rabbit, Rat<br><b>Homology:</b> Cow: 93%; Dog: 93%; Goat: 93%; Guinea Pig: 100%; Horse: 100%; Human: 100%;<br>Mouse: 100%; Rabbit: 86%; Rat: 100%  |
| Formulation:            | Liquid. Purified antibody supplied in 1x PBS buffer with 0.09% (w/v) sodium azide and 2% sucrose.<br><i>Note that this product is shipped as lyophilized powder to China customers.</i>   |
| Concentration:          | lot specific  |
| Purification:           | Affinity Purified   |
| Conjugation:            | Unconjugated  |
| Storage:                | For short term use, store at 2-8°C up to 1 week. For long term storage, store at -20°C in small aliquots to prevent freeze-thaw cycles.   |
| Stability:              | Shelf life: one year from despatch.   |
| Predicted Protein Size: | 31kDa   |
| Gene Name:              | protein phosphatase 1 regulatory subunit 3B   |
| Database Link:          | <a href="#">NP_078883</a><br><a href="#">Entrez Gene 79660 Human</a><br><a href="#">Q86XI6</a>  |
| Background:             | This gene encodes the catalytic subunit of the serine/threonine phosphatase, protein phosphatase-1. The encoded protein is expressed in liver and skeletal muscle tissue and may be involved in regulating glycogen synthesis in these tissues. This gene may be involved in type 2 diabetes and maturity-onset diabetes of the young. Alternate splicing results in multiple transcript variants that encode the same protein. |
| Synonyms:               | FLJ14005; FLJ34675; GL; PPP1R4; R4  |



[View online »](#)

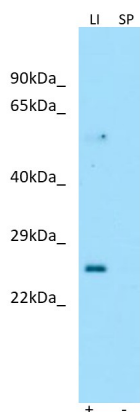
**Protein Families:** Druggable Genome, Phosphatase

**Protein Pathways:** Insulin signaling pathway

**Product images:**



WB Suggested Anti-PPP1R3B Antibody  
Titration: 1.0 ug/ml  
Positive Control: MCF7 Whole Cell



Host: Rabbit  
Target Name: PPP1R3B  
Positive Control: ~25ug Rat Liver (LI)  
Negative Control: ~25ug Mouse Spleen (SP)  
Antibody Concentration: 1ug/ml

Host: Rabbit  
Target: PPP1R3B  
Positive control (+): Rat Liver (R-LI)  
Negative control (-): Mouse Spleen (M-SP)  
Antibody concentration: 1ug/ml