

Product datasheet for **TA358012**

POLG2 Rabbit Polyclonal Antibody

Product data:

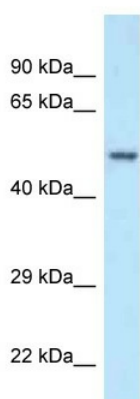
Product Type:	Primary Antibodies
Applications:	WB
Reactivity:	Human
Host:	Rabbit
Clonality:	Polyclonal
Specificity:	Expected reactivity: Human Homology: Human: 100%
Formulation:	Liquid. Purified antibody supplied in 1x PBS buffer with 0.09% (w/v) sodium azide and 2% sucrose. <i>Note that this product is shipped as lyophilized powder to China customers.</i>
Concentration:	lot specific
Purification:	Affinity Purified
Conjugation:	Unconjugated
Storage:	For short term use, store at 2-8°C up to 1 week. For long term storage, store at -20°C in small aliquots to prevent freeze-thaw cycles.
Stability:	Shelf life: one year from despatch.
Predicted Protein Size:	53kDa
Gene Name:	polymerase (DNA) gamma 2, accessory subunit
Database Link:	NP_009146 Entrez Gene 11232 Human Q9UHN1
Background:	This gene encodes the processivity subunit of the mitochondrial DNA polymerase gamma. The encoded protein forms a heterotrimer containing one catalytic subunit and two processivity subunits. This protein enhances DNA binding and promotes processive DNA synthesis. Mutations in this gene result in autosomal dominant progressive external ophthalmoplegia with mitochondrial DNA deletions.
Synonyms:	HP55; MTPOLB; p55; PEOA4; POLB; PolG-beta; POLGB
Protein Families:	Stem cell - Pluripotency



[View online »](#)

Protein Pathways: Metabolic pathways

Product images:



WB Suggested Anti-POLG2 Antibody
Titration: 1.0 ug/ml
Positive Control: Fetal kidney