

Product datasheet for **TA358007**

AMY2B Rabbit Polyclonal Antibody

Product data:

Product Type:	Primary Antibodies
Applications:	WB
Reactivity:	Human
Host:	Rabbit
Clonality:	Polyclonal
Specificity:	Expected reactivity: Cow, Dog, Guinea Pig, Horse, Human, Rat, Sheep Homology: Cow: 92%; Dog: 100%; Guinea Pig: 77%; Horse: 82%; Human: 100%; Rat: 92%; Sheep: 92%
Formulation:	Liquid. Purified antibody supplied in 1x PBS buffer with 0.09% (w/v) sodium azide and 2% sucrose. <i>Note that this product is shipped as lyophilized powder to China customers.</i>
Concentration:	lot specific
Purification:	Affinity Purified
Conjugation:	Unconjugated
Storage:	For short term use, store at 2-8°C up to 1 week. For long term storage, store at -20°C in small aliquots to prevent freeze-thaw cycles.
Stability:	Shelf life: one year from despatch.
Predicted Protein Size:	56kDa
Gene Name:	amylase, alpha 2B (pancreatic)
Database Link:	NP_066188 Entrez Gene 280 Human P19961
Background:	Amylases are secreted proteins that hydrolyze 1,4-alpha-glucoside bonds in oligosaccharides and polysaccharides, and thus catalyze the first step in digestion of dietary starch and glycogen. The human genome has a cluster of several amylase genes that are expressed at high levels in either salivary gland or pancreas. This gene encodes an amylase isoenzyme produced by the pancreas.
Synonyms:	AMY2; glycogenase

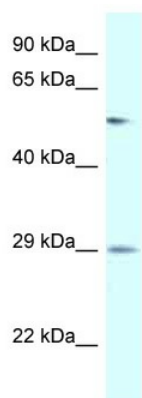


[View online »](#)

Protein Families: Secreted Protein

Protein Pathways: Metabolic pathways, Starch and sucrose metabolism

Product images:



WB Suggested Anti-AMY2B Antibody
Titration: 1.0 ug/ml
Positive Control: Placenta