

Product datasheet for **TA358005**

GALK1 Rabbit Polyclonal Antibody

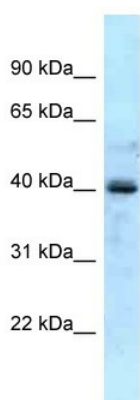
Product data:

| | |
|-------------------------|--|
| Product Type: | Primary Antibodies |
| Applications: | WB |
| Reactivity: | Human |
| Host: | Rabbit |
| Clonality: | Polyclonal |
| Specificity: | Expected reactivity: Cow, Dog, Guinea Pig, Horse, Human, Mouse, Rabbit, Rat Homology: Cow: 86%; Dog: 86%; Guinea Pig: 86%; Horse: 86%; Human: 100%; Mouse: 86%; Rabbit: 93%; Rat: 86% |
| Formulation: | Liquid. Purified antibody supplied in 1x PBS buffer with 0.09% (w/v) sodium azide and 2% sucrose. <i>Note that this product is shipped as lyophilized powder to China customers.</i> |
| Concentration: | lot specific |
| Purification: | Affinity Purified |
| Conjugation: | Unconjugated |
| Storage: | For short term use, store at 2-8°C up to 1 week. For long term storage, store at -20°C in small aliquots to prevent freeze-thaw cycles. |
| Stability: | Shelf life: one year from despatch. |
| Predicted Protein Size: | 43kDa |
| Gene Name: | galactokinase 1 |
| Database Link: | NP_000145 Entrez Gene 2584 Human P51570 |
| Background: | Galactokinase is a major enzyme for the metabolism of galactose and its deficiency causes congenital cataracts during infancy and presenile cataracts in the adult population. |
| Synonyms: | GALK; GK1 |
| Protein Families: | Druggable Genome |
| Protein Pathways: | Amino sugar and nucleotide sugar metabolism, Galactose metabolism, Metabolic pathways |



[View online »](#)

Product images:



WB Suggested Anti-GALK1 Antibody
Titration: 1.0 ug/ml
Positive Control: Fetal Liver