

Product datasheet for **TA357989**

MSRB3 Rabbit Polyclonal Antibody

Product data:

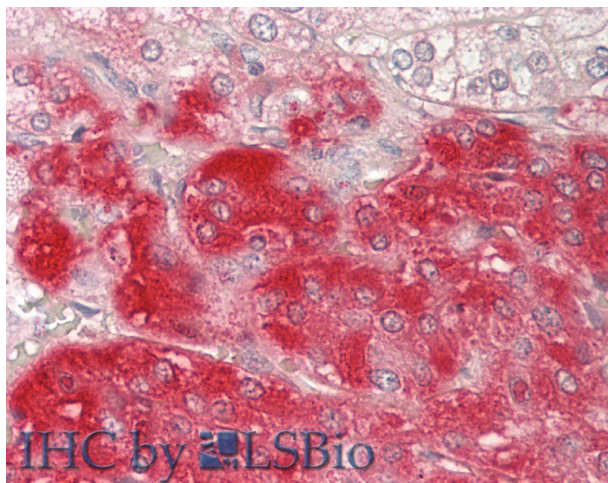
Product Type:	Primary Antibodies
Applications:	IHC
Reactivity:	Human
Host:	Rabbit
Clonality:	Polyclonal
Immunogen:	The immunogen is a synthetic peptide directed towards the following sequence ESAFEGEYTHHKDPGIYKCVCGTPLFKSETKFDSGSGWPSFHDVINSEA
Specificity:	Expected reactivity: Cow, Dog, Guinea Pig, Horse, Human, Mouse, Rabbit, Rat, Yeast, Zebrafish Homology: Cow: 100%; Dog: 86%; Guinea Pig: 100%; Horse: 100%; Human: 100%; Mouse: 100%; Rabbit: 100%; Rat: 100%; Yeast: 79%; Zebrafish: 86%
Formulation:	Liquid. Purified antibody supplied in 1x PBS buffer with 0.09% (w/v) sodium azide and 2% sucrose.
Concentration:	lot specific
Purification:	Affinity Purified
Conjugation:	Unconjugated
Storage:	For short term use, store at 2-8°C up to 1 week. For long term storage, store at -20°C in small aliquots to prevent freeze-thaw cycles.
Stability:	Shelf life: one year from despatch.
Predicted Protein Size:	21 kDa
Gene Name:	methionine sulfoxide reductase B3
Database Link:	NP_001026849 Entrez Gene 253827 Human Q8IXL7
Background:	The protein encoded by this gene catalyzes the reduction of methionine sulfoxide to methionine. This enzyme acts as a monomer and requires zinc as a cofactor. Several transcript variants encoding two different isoforms have been found for this gene. One of the isoforms localizes to mitochondria while the other localizes to endoplasmic reticula.



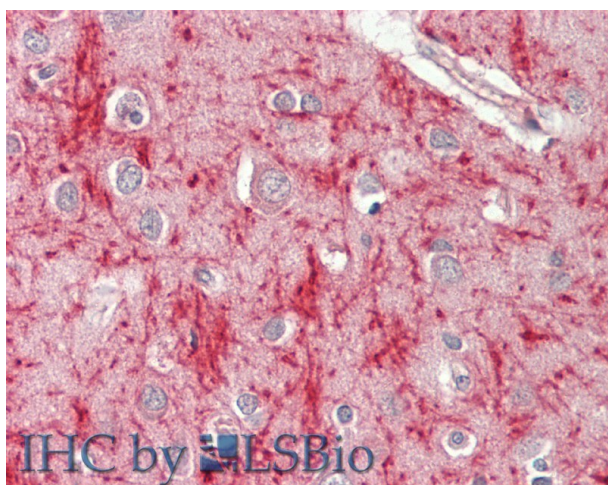
[View online »](#)

Synonyms: DKFZp686C1178; FLJ36866

Product images:



Rabbit Anti-MSRB3 antibody
Catalog Number: ARP61892
Formalin Fixed Paraffin Embedded Tissue:
Human Adrenal
Primary antibody Concentration: 1:100
Secondary Antibody: Donkey anti-Rabbit-Cy3
Secondary Antibody Concentration: 1:200
Magnification: 20x
Exposure Time: 0.5-2.0sec



Rabbit Anti-MSRB3 antibody
Catalog Number: ARP61892
Formalin Fixed Paraffin Embedded Tissue:
Human Brain, Cortex
Primary antibody Concentration: 1:100
Secondary Antibody: Donkey anti-Rabbit-Cy3
Secondary Antibody Concentration: 1:200
Magnification: 20x
Exposure Time: 0.5-2.0sec