

Product datasheet for **TA357987**

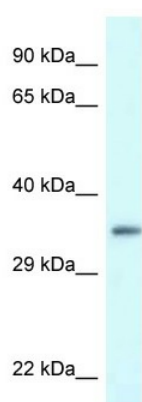
PDLIM1 Rabbit Polyclonal Antibody

Product data:

Product Type:	Primary Antibodies
Applications:	WB
Reactivity:	Human
Host:	Rabbit
Clonality:	Polyclonal
Specificity:	Expected reactivity: Cow, Dog, Guinea Pig, Horse, Human, Mouse, Pig, Rabbit, Rat Homology: Cow: 100%; Dog: 100%; Guinea Pig: 93%; Horse: 100%; Human: 100%; Mouse: 86%; Pig: 100%; Rabbit: 100%; Rat: 93%
Formulation:	Liquid. Purified antibody supplied in 1x PBS buffer with 0.09% (w/v) sodium azide and 2% sucrose. <i>Note that this product is shipped as lyophilized powder to China customers.</i>
Concentration:	lot specific
Purification:	Affinity Purified
Conjugation:	Unconjugated
Storage:	For short term use, store at 2-8°C up to 1 week. For long term storage, store at -20°C in small aliquots to prevent freeze-thaw cycles.
Stability:	Shelf life: one year from despatch.
Predicted Protein Size:	36kDa
Gene Name:	PDZ and LIM domain 1
Database Link:	NP_066272 Entrez Gene 9124 Human O00151
Background:	PDLIM1 is a cytoskeletal protein that may act as an adapter that brings other proteins (like kinases) to the cytoskeleton.
Synonyms:	CLIM1; CLP-36; CLP36; elfin; enigma; hCLIM1



[View online »](#)

Product images:

WB Suggested Anti-PDLIM1 Antibody
Titration: 1.0 ug/ml
Positive Control: HeLa Whole Cell PDLIM1 is supported by BioGPS gene expression data to be expressed in HeLa