

Product datasheet for **TA357980**

TOM1L1 Rabbit Polyclonal Antibody

Product data:

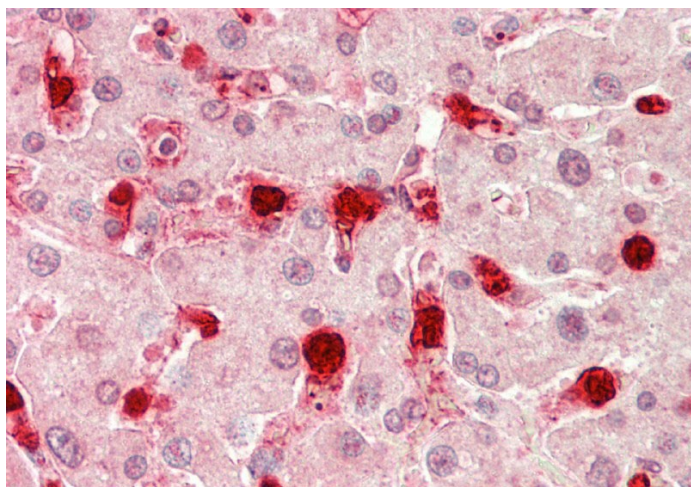
Product Type:	Primary Antibodies
Applications:	WB
Reactivity:	Human
Host:	Rabbit
Clonality:	Polyclonal
Specificity:	Expected reactivity: Human, Rabbit, Rat Homology: Human: 100%; Rabbit: 79%; Rat: 83%
Formulation:	Liquid. Purified antibody supplied in 1x PBS buffer with 0.09% (w/v) sodium azide and 2% sucrose.
Concentration:	lot specific
Purification:	Affinity Purified
Conjugation:	Unconjugated
Storage:	For short term use, store at 2-8°C up to 1 week. For long term storage, store at -20°C in small aliquots to prevent freeze-thaw cycles.
Stability:	Shelf life: one year from despatch.
Predicted Protein Size:	52kDa
Gene Name:	target of myb1 like 1 membrane trafficking protein
Database Link:	NP_005477 Entrez Gene 10040 Human O75674
Synonyms:	OK/KNS-CL.3; SRCASM



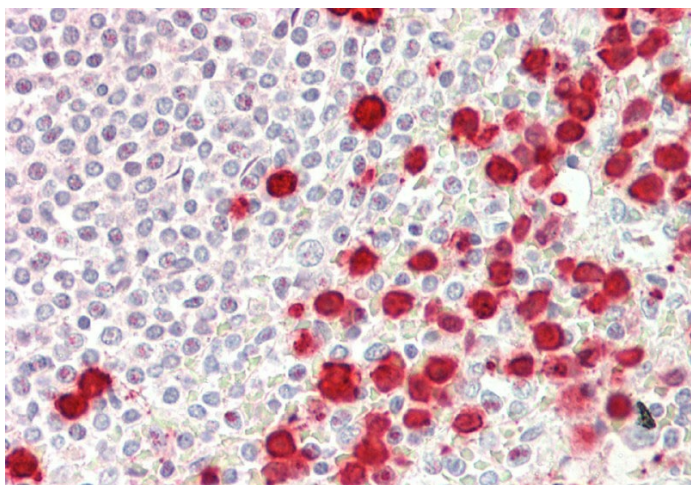
[View online »](#)

Product images:

WB Suggested Anti-TOM1L1 Antibody
Titration: 1.0 ug/ml
Positive Control: Fetal Brain



Rabbit Anti-TOM1L1 antibody
Catalog Number: ARP61882
Formalin Fixed Paraffin Embedded Tissue:
Human Liver
Primary antibody Concentration: 1:100
Secondary Antibody: Donkey anti-Rabbit-Cy3
Secondary Antibody Concentration: 1:200
Magnification: 20x
Exposure Time: 0.5-2.0sec



Rabbit Anti-TOM1L1 antibody
Catalog Number: ARP61882
Formalin Fixed Paraffin Embedded Tissue:
Human Spleen
Primary antibody Concentration: 1:100
Secondary Antibody: Donkey anti-Rabbit-Cy3
Secondary Antibody Concentration: 1:200
Magnification: 20x
Exposure Time: 0.5-2.0sec