

Product datasheet for **TA357976**

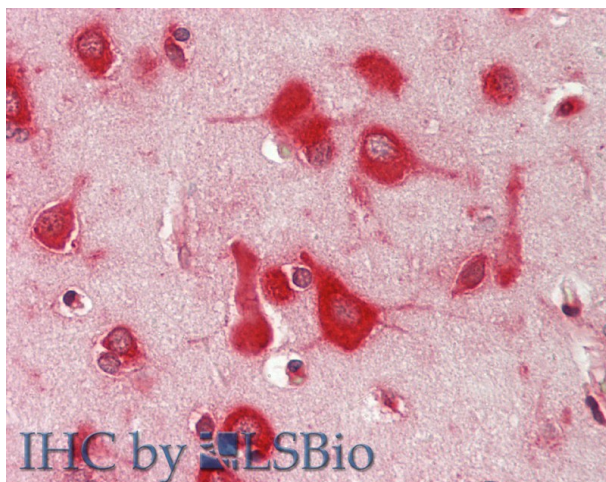
SRPK2 Rabbit Polyclonal Antibody

Product data:

Product Type:	Primary Antibodies
Applications:	IHC
Reactivity:	Human
Host:	Rabbit
Clonality:	Polyclonal
Immunogen:	The immunogen is a synthetic peptide directed towards the following sequence AFELATGDYLFEPHSGEDYSRDEDHIAHIIELLGSIPRHFALS G KYSREF
Specificity:	Expected reactivity: Cow, Dog, Guinea Pig, Horse, Human, Mouse, Rabbit, Rat, Zebrafish Homology: Cow: 100%; Dog: 100%; Guinea Pig: 100%; Horse: 100%; Human: 100%; Mouse: 100%; Rabbit: 100%; Rat: 100%; Zebrafish: 100%
Formulation:	Liquid. Purified antibody supplied in 1x PBS buffer with 0.09% (w/v) sodium azide and 2% sucrose.
Concentration:	lot specific
Purification:	Affinity Purified
Conjugation:	Unconjugated
Storage:	For short term use, store at 2-8°C up to 1 week. For long term storage, store at -20°C in small aliquots to prevent freeze-thaw cycles.
Stability:	Shelf life: one year from despatch.
Predicted Protein Size:	78 kDa
Gene Name:	SRSF protein kinase 2
Database Link:	NP_872633 Entrez Gene 6733 Human P78362
Synonyms:	FLJ36101; H_RG152G17.1a; H_RG152G17.1b; SFRSK2; WUGSC:H_RG152G17.1a
Protein Families:	Druggable Genome, Protein Kinase



[View online »](#)

Product images:

Rabbit Anti-SRPK2 antibody
Catalog Number: ARP61851
Formalin Fixed Paraffin Embedded Tissue:
Human Brain, Cortex
Primary antibody Concentration: 1:100
Secondary Antibody: Donkey anti-Rabbit-Cy3
Secondary Antibody Concentration: 1:200
Magnification: 20x
Exposure Time: 0.5-2.0sec