

Product datasheet for **TA357975**

MECR Rabbit Polyclonal Antibody

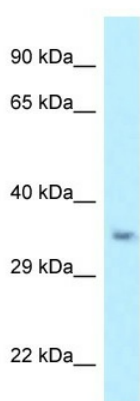
Product data:

Product Type:	Primary Antibodies
Applications:	WB
Reactivity:	Human
Host:	Rabbit
Clonality:	Polyclonal
Specificity:	Expected reactivity: Cow, Dog, Guinea Pig, Horse, Human, Mouse, Pig, Rabbit, Rat, Yeast, Zebrafish Homology: Cow: 100%; Dog: 100%; Guinea Pig: 93%; Horse: 100%; Human: 100%; Mouse: 100%; Pig: 100%; Rabbit: 100%; Rat: 100%; Yeast: 100%; Zebrafish: 85%
Formulation:	Liquid. Purified antibody supplied in 1x PBS buffer with 0.09% (w/v) sodium azide and 2% sucrose. <i>Note that this product is shipped as lyophilized powder to China customers.</i>
Concentration:	lot specific
Purification:	Affinity Purified
Conjugation:	Unconjugated
Storage:	For short term use, store at 2-8°C up to 1 week. For long term storage, store at -20°C in small aliquots to prevent freeze-thaw cycles.
Stability:	Shelf life: one year from despatch.
Predicted Protein Size:	32kDa
Gene Name:	mitochondrial trans-2-enoyl-CoA reductase
Database Link:	NP_001019903 Entrez Gene 51102 Human Q9BV79-2
Background:	MECR catalyzes the reduction of trans-2-enoyl-CoA to acyl-CoA with chain length from C6 to C16 in an NADPH-dependent manner with preference to medium chain length substrate. It may have a role in the mitochondrial synthesis of fatty acids.
Synonyms:	CGI-63; FASN2B; HsNrnf-1; NBRF1; NRBF-1; NRBF1
Protein Families:	Druggable Genome



[View online »](#)

Protein Pathways: Fatty acid elongation in mitochondria, Metabolic pathways

Product images:

WB Suggested Anti-MECR Antibody
Titration: 1.0 ug/ml
Positive Control: U937 Whole Cell