

## Product datasheet for **TA357962**

### hnRNP G (RBMX) Rabbit Polyclonal Antibody

#### Product data:

Product Type:	Primary Antibodies
Applications:	WB
Reactivity:	Human
Host:	Rabbit
Clonality:	Polyclonal
Specificity:	<b>Expected reactivity:</b> Cow, Dog, Guinea Pig, Horse, Human, Mouse, Rabbit, Rat <b>Homology:</b> Cow: 100%; Dog: 100%; Guinea Pig: 100%; Horse: 100%; Human: 100%; Mouse: 100%; Rabbit: 100%; Rat: 100%
Formulation:	Liquid. Purified antibody supplied in 1x PBS buffer with 0.09% (w/v) sodium azide and 2% sucrose. <i>Note that this product is shipped as lyophilized powder to China customers.</i>
Concentration:	lot specific
Purification:	Affinity Purified
Conjugation:	Unconjugated
Storage:	For short term use, store at 2-8°C up to 1 week. For long term storage, store at -20°C in small aliquots to prevent freeze-thaw cycles.
Stability:	Shelf life: one year from despatch.
Predicted Protein Size:	43kDa
Gene Name:	RNA binding motif protein, X-linked
Database Link:	<a href="#">NP_002130</a> <a href="#">Entrez Gene 27316 Human</a> <a href="#">P38159</a>
Background:	This gene belongs to the RBMY gene family which includes candidate Y chromosome spermatogenesis genes. This gene, an active X chromosome homolog of the Y chromosome RBMY gene, is widely expressed whereas the RBMY gene evolved a male-specific function in spermatogenesis. Pseudogenes of this gene, found on chromosomes 1, 4, 9, 11, and 6, were likely derived by retrotransposition from the original gene. Alternatively spliced transcript variants encoding different isoforms have been identified. A snoRNA gene (SNORD61) is found in one of its introns.

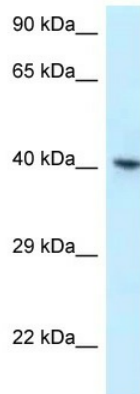


[View online »](#)

**Synonyms:** hnRNP-G; HNRPG; RBMXP1; RBMXRT; RNMX

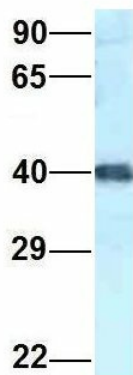
**Protein Pathways:** Spliceosome

**Product images:**



WB Suggested Anti-RBMX Antibody  
 Titration: 1.0 ug/ml  
 Positive Control: OVCAR-3 Whole Cell  
 RBMX is supported by BioGPS gene expression data to be expressed in OVCAR3

**RBMX**



Rabbit Anti-RBMX  
 Sample Type: Human HeLa  
 Antibody Concentration: 1ug/mL

Host: Rabbit  
 Target Name: RBMX  
 Sample Type: HeLa  
 Antibody Dilution: 1.0ug/ml  
 RBMX is supported by BioGPS gene expression data to be expressed in HeLa