

## Product datasheet for **TA357961**

### STOML2 Rabbit Polyclonal Antibody

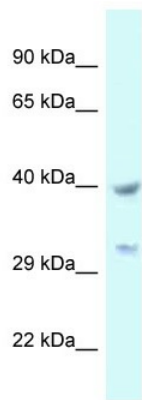
#### Product data:

Product Type:	Primary Antibodies
Applications:	WB
Reactivity:	Human
Host:	Rabbit
Clonality:	Polyclonal
Specificity:	<b>Expected reactivity:</b> Cow, Dog, Guinea Pig, Horse, Human, Pig, Rabbit <b>Homology:</b> Cow: 86%; Dog: 100%; Guinea Pig: 79%; Horse: 93%; Human: 100%; Pig: 100%; Rabbit: 92%
Formulation:	Liquid. Purified antibody supplied in 1x PBS buffer with 0.09% (w/v) sodium azide and 2% sucrose. <i>Note that this product is shipped as lyophilized powder to China customers.</i>
Concentration:	lot specific
Purification:	Affinity Purified
Conjugation:	Unconjugated
Storage:	For short term use, store at 2-8°C up to 1 week. For long term storage, store at -20°C in small aliquots to prevent freeze-thaw cycles.
Stability:	Shelf life: one year from despatch.
Predicted Protein Size:	39kDa
Gene Name:	stomatin like 2
Database Link:	<a href="#">NP_038470</a> <a href="#">Entrez Gene 30968 Human</a> <a href="#">Q9UJZ1</a>
Background:	The function of this protein remains unknown.
Synonyms:	HSPC108; SLP-2; SLP2
Protein Families:	Druggable Genome



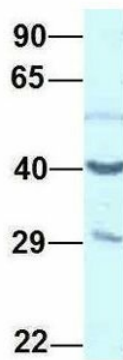
[View online »](#)

Product images:



WB Suggested Anti-STOML2 Antibody  
 Titration: 1.0 ug/ml  
 Positive Control: 721\_B Whole Cell  
 STOML2 is supported by BioGPS gene expression data to be expressed in 721\_B

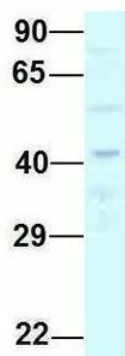
**STOML2**



Rabbit Anti-STOML2  
 Sample Type: Human 293T  
 Antibody Concentration: 1ug/mL

Host: Rabbit  
 Target Name: STOML2  
 Sample Type: Human 293T  
 Antibody Dilution: 1.0ug/ml  
 STOML2 is supported by BioGPS gene expression data to be expressed in HEK293T

## STOML2



Rabbit Anti-STOML2  
Sample Type: Human Fetal Heart  
Antibody Concentration: 1ug/mL

Host: Rabbit  
Target Name: STOML2  
Sample Type: Human Fetal Heart  
Antibody Dilution: 1.0ug/ml