

Product datasheet for **TA357960**

Mitofilin (IMMT) Rabbit Polyclonal Antibody

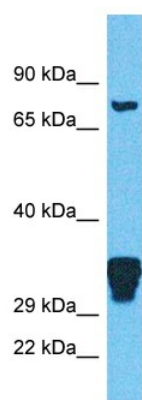
Product data:

Product Type:	Primary Antibodies
Applications:	WB
Reactivity:	Human
Host:	Rabbit
Clonality:	Polyclonal
Immunogen:	The immunogen is a synthetic peptide directed towards the N-terminal region of Human IMMT
Specificity:	Expected reactivity: Cow, Dog, Guinea Pig, Horse, Human, Rabbit, Rat Homology: Cow: 79%; Dog: 85%; Guinea Pig: 86%; Horse: 100%; Human: 100%; Rabbit: 86%; Rat: 86%
Formulation:	Liquid. Purified antibody supplied in 1x PBS buffer with 0.09% (w/v) sodium azide and 2% sucrose. <i>Note that this product is shipped as lyophilized powder to China customers.</i>
Concentration:	lot specific
Purification:	Affinity purified
Conjugation:	Unconjugated
Storage:	For short term use, store at 2-8°C up to 1 week. For long term storage, store at -20°C in small aliquots to prevent freeze-thaw cycles.
Stability:	Shelf life: one year from despatch.
Predicted Protein Size:	79kDa
Gene Name:	inner membrane mitochondrial protein
Database Link:	XP_005264170 Entrez Gene 10989 Human Q16891-3
Background:	The function of this protein remains unknown.
Synonyms:	DKFZp779P1653; HMP; MGC111146; mitofilin; P87; p87/89; P89; PIG4; PIG52



[View online »](#)

Product images:



Host: Rabbit
Target Name: IMMT
Sample Tissue: 293T Cell Lysate
Antibody Dilution: 1.0 μ g/ml

Host: Rabbit
Target Name: IMMT
Sample Type: 293T Whole Cell lysates
Antibody Dilution: 1.0 μ g/ml