

Product datasheet for **TA357957**

RPS9 Rabbit Polyclonal Antibody

Product data:

Product Type:	Primary Antibodies
Applications:	IHC, WB
Reactivity:	Human
Host:	Rabbit
Clonality:	Polyclonal
Specificity:	Expected reactivity: Cow, Dog, Guinea Pig, Horse, Human, Mouse, Rabbit, Rat, Yeast, Zebrafish Homology: Cow: 100%; Dog: 100%; Guinea Pig: 100%; Horse: 100%; Human: 100%; Mouse: 100%; Rabbit: 100%; Rat: 100%; Yeast: 93%; Zebrafish: 93%
Formulation:	Liquid. Purified antibody supplied in 1x PBS buffer with 0.09% (w/v) sodium azide and 2% sucrose. <i>Note that this product is shipped as lyophilized powder to China customers.</i>
Concentration:	lot specific
Purification:	Affinity Purified
Conjugation:	Unconjugated
Storage:	For short term use, store at 2-8°C up to 1 week. For long term storage, store at -20°C in small aliquots to prevent freeze-thaw cycles.
Stability:	Shelf life: one year from despatch.
Predicted Protein Size:	21kDa
Gene Name:	ribosomal protein S9
Database Link:	NP_001004 Entrez Gene 6203 Human P46781



[View online »](#)

Background:

Ribosomes, the organelles that catalyze protein synthesis, consist of a small 40S subunit and a large 60S subunit. Together these subunits are composed of 4 RNA species and approximately 80 structurally distinct proteins. This gene encodes a ribosomal protein that is a component of the 40S subunit. The protein belongs to the S4P family of ribosomal proteins. It is located in the cytoplasm. Variable expression of this gene in colorectal cancers compared to adjacent normal tissues has been observed, although no correlation between the level of expression and the severity of the disease has been found. As is typical for genes encoding ribosomal proteins, multiple processed pseudogenes derived from this gene are dispersed through the genome.

Synonyms:

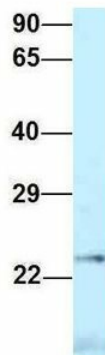
OTTHUMP00000069577; OTTHUMP00000069585

Protein Pathways:

Ribosome

Product images:

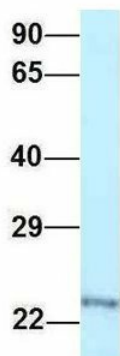

WB Suggested Anti-RPS9 Antibody
 Titration: 1.0 ug/ml
 Positive Control: HeLa Whole Cell RPS9 is supported by BioGPS gene expression data to be expressed in HeLa

RPS9


Rabbit Anti-RPS9
 Sample Type: Human MCF7
 Antibody Concentration: 1ug/mL

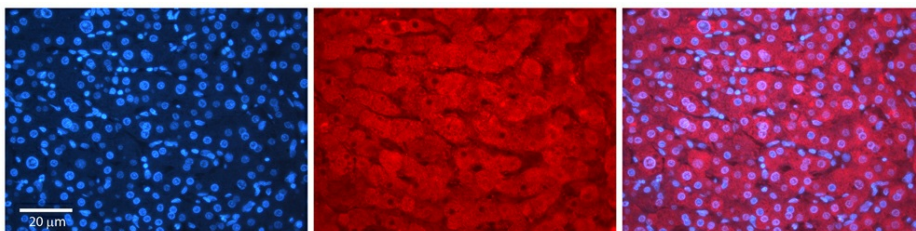
Host: Rabbit
 Target Name: RPS9
 Sample Type: Human MCF7
 Antibody Dilution: 1.0ug/ml RPS9 is supported by BioGPS gene expression data to be expressed in MCF7

RPS9

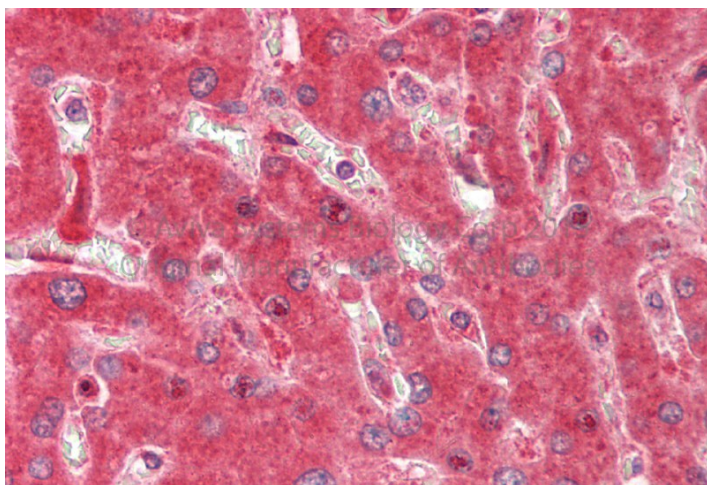


Rabbit Anti-RPS9
 Sample Type: Human 721_B
 Antibody Concentration: 1ug/mL

Host: Rabbit
 Target Name: RPS9
 Sample Type: Human 721_B
 Antibody Dilution: 1.0ug/ml RPS9 is strongly supported by BioGPS gene expression data to be expressed in Human 721_B cells



Rabbit Anti-RPS9 Antibody
 Catalog Number: TA357957
 Formalin Fixed Paraffin Embedded Tissue:
 Human Adult Liver
 Observed Staining: Cytoplasm in hepatocytes, strong signal, very wide tissue distribution
 Primary Antibody Concentration: 1:100
 Secondary Antibody: Donkey anti-Rabbit-Cy3
 Secondary Antibody Concentration: 1:200
 Magnification: 20X
 Exposure Time: 0.5-2.0 sec
 Protocol located in Reviews and Data.



Rabbit Anti-RPS9 antibody
 Catalog Number: ARP61782
 Formalin Fixed Paraffin Embedded Tissue:
 Human Adult Liver
 Observed Staining: Cytoplasm in hepatocytes
 Primary Antibody Concentration: 1:600
 Secondary Antibody: Donkey anti-Rabbit-Cy3
 Secondary Antibody Concentration: 1:200
 Magnification: 20X
 Exposure Time: 0.5-2.0 sec