

Product datasheet for **TA357954**

EMR2 (ADGRE2) Rabbit Polyclonal Antibody

Product data:

Product Type:	Primary Antibodies
Applications:	WB
Reactivity:	Human
Host:	Rabbit
Clonality:	Polyclonal
Specificity:	Expected reactivity: Cow, Dog, Horse, Human, Mouse, Pig, Rabbit Homology: Cow: 86%; Dog: 86%; Horse: 93%; Human: 100%; Mouse: 100%; Pig: 93%; Rabbit: 79%
Formulation:	Liquid. Purified antibody supplied in 1x PBS buffer with 0.09% (w/v) sodium azide and 2% sucrose. <i>Note that this product is shipped as lyophilized powder to China customers.</i>
Concentration:	lot specific
Purification:	Affinity Purified
Conjugation:	Unconjugated
Storage:	For short term use, store at 2-8°C up to 1 week. For long term storage, store at -20°C in small aliquots to prevent freeze-thaw cycles.
Stability:	Shelf life: one year from despatch.
Predicted Protein Size:	89kDa
Gene Name:	adhesion G protein-coupled receptor E2
Database Link:	NP_690883 Entrez Gene 30817 Human Q9UHX3-2



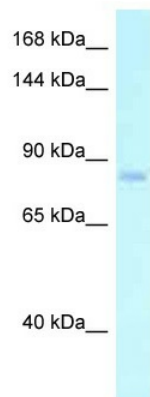
[View online »](#)

Background:

This gene encodes a member of the class B seven-span transmembrane (TM7) subfamily of G-protein coupled receptors. These proteins are characterized by an extended extracellular region with a variable number of N-terminal epidermal growth factor-like domains coupled to a TM7 domain via a mucin-like spacer domain. The encoded protein is expressed mainly in myeloid cells where it promotes cell-cell adhesion through interaction with chondroitin sulfate chains. This gene is situated in a cluster of related genes on chromosome 19. Alternatively spliced transcript variants encoding multiple isoforms have been observed for this gene.

Protein Families:

Druggable Genome, GPCR, Transmembrane

Product images:

WB Suggested Anti-EMR2 Antibody
Titration: 1.0 ug/ml
Positive Control: PANC1 Whole Cell