

## Product datasheet for **TA357950**

### CDC2L1 (CDK11B) Rabbit Polyclonal Antibody

#### Product data:

Product Type:	Primary Antibodies
Applications:	WB
Reactivity:	Human
Host:	Rabbit
Clonality:	Polyclonal
Immunogen:	The immunogen is a synthetic peptide directed towards the middle region of human CDK11B
Specificity:	<b>Expected reactivity:</b> Cow, Dog, Horse, Human, Mouse, Pig, Rabbit, Rat, Yeast, Zebrafish <b>Homology:</b> Cow: 100%; Dog: 100%; Horse: 100%; Human: 100%; Mouse: 100%; Pig: 100%; Rabbit: 100%; Rat: 100%; Yeast: 79%; Zebrafish: 90%
Formulation:	Liquid. Purified antibody supplied in 1x PBS buffer with 0.09% (w/v) sodium azide and 2% sucrose. <i>Note that this product is shipped as lyophilized powder to China customers.</i>
Concentration:	lot specific
Purification:	Affinity Purified
Conjugation:	Unconjugated
Storage:	For short term use, store at 2-8°C up to 1 week. For long term storage, store at -20°C in small aliquots to prevent freeze-thaw cycles.
Stability:	Shelf life: one year from despatch.
Predicted Protein Size:	34kDa
Gene Name:	cyclin-dependent kinase 11B
Database Link:	<a href="#">NP_277022.1</a> <a href="#">Entrez Gene 984 Human</a> <a href="#">P21127</a>



[View online »](#)

**Background:**

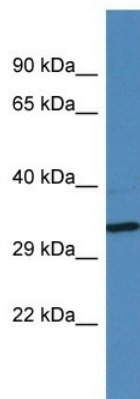
This gene encodes a member of the serine/threonine protein kinase family. Members of this kinase family are known to be essential for eukaryotic cell cycle control. Due to a segmental duplication, this gene shares very high sequence identity with a neighboring gene. These two genes are frequently deleted or altered in neuroblastoma. The protein kinase encoded by this gene can be cleaved by caspases and may play a role in cell apoptosis. Alternative splicing results in multiple transcript variants.

**Synonyms:**

AA989746; Cdc2l1; Cdc2l2; Cdc11b; Cdk11; CDK11-p46; CDK11-p58; CDK11-p110; p58

**Protein Families:**

Druggable Genome, Transcription Factors

**Product images:**

Host: Rabbit  
Target Name: LOC283685  
Sample Type: HeLa Whole cell lysates  
Antibody Dilution: 1.0ug/ml