

Product datasheet for **TA357948**

CPVL Rabbit Polyclonal Antibody

Product data:

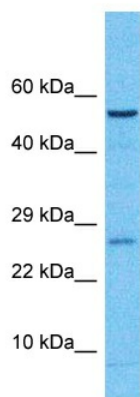
Product Type:	Primary Antibodies
Applications:	WB
Reactivity:	Human
Host:	Rabbit
Clonality:	Polyclonal
Immunogen:	The immunogen is a synthetic peptide directed towards the C-terminal region of Human CPVL
Specificity:	Expected reactivity: Cow, Horse, Human, Rabbit Homology: Cow: 86%; Horse: 86%; Human: 100%; Rabbit: 86%
Formulation:	Liquid. Purified antibody supplied in 1x PBS buffer with 0.09% (w/v) sodium azide and 2% sucrose. <i>Note that this product is shipped as lyophilized powder to China customers.</i>
Concentration:	lot specific
Purification:	Affinity Purified
Conjugation:	Unconjugated
Storage:	For short term use, store at 2-8°C up to 1 week. For long term storage, store at -20°C in small aliquots to prevent freeze-thaw cycles.
Stability:	Shelf life: one year from despatch.
Predicted Protein Size:	52kDa
Gene Name:	carboxypeptidase, vitellogenic like
Database Link:	XP_005249843 Entrez Gene 54504 Human Q9H3G5
Background:	The protein encoded by this gene is a carboxypeptidase and bears strong sequence similarity to serine carboxypeptidases. Carboxypeptidases are a large class of proteases that act to cleave a single amino acid from the carboxy termini of proteins or peptides. The exact function of this protein, however, has not been determined. At least two alternatively spliced transcripts which encode the same protein have been observed.



[View online »](#)

Synonyms: HVLP; MGC10029; OTTHUMP00000202581; VLP

Product images:



Host: Rabbit
Target Name: CPVL
Sample Tissue: Fetal Liver Lysate
Antibody Dilution: 1.0 μ g/ml

Host: Rabbit
Target Name: CPVL
Sample Type: Fetal Liver lysates
Antibody Dilution: 1 μ g/ml