

Product datasheet for **TA357947**

Mapre1 Rabbit Polyclonal Antibody

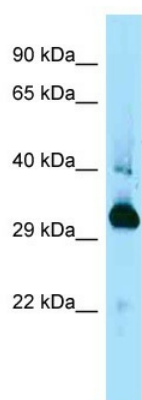
Product data:

Product Type:	Primary Antibodies
Applications:	WB
Reactivity:	Mouse
Host:	Rabbit
Clonality:	Polyclonal
Specificity:	Expected reactivity: Cow, Dog, Goat, Guinea Pig, Horse, Human, Mouse, Rabbit, Rat Homology: Cow: 100%; Dog: 100%; Goat: 100%; Guinea Pig: 100%; Horse: 100%; Human: 100%; Mouse: 100%; Rabbit: 100%; Rat: 100%
Formulation:	Liquid. Purified antibody supplied in 1x PBS buffer with 0.09% (w/v) sodium azide and 2% sucrose.
Concentration:	lot specific
Purification:	Affinity Purified
Conjugation:	Unconjugated
Storage:	For short term use, store at 2-8°C up to 1 week. For long term storage, store at -20°C in small aliquots to prevent freeze-thaw cycles.
Stability:	Shelf life: one year from despatch.
Predicted Protein Size:	30kDa
Gene Name:	microtubule-associated protein, RP/EB family, member 1
Database Link:	NP_031922 Entrez Gene 13589 Mouse Q61166
Background:	Mapre1 may be involved in microtubule polymerization, and spindle function by stabilizing microtubules and anchoring them at centrosomes. Mapre1 may play a role in cell migration.
Synonyms:	EB1; MGC117374; MGC129946



[View online »](#)

Product images:



WB Suggested Anti-Mapre1 Antibody
Titration: 1.0 ug/ml
Positive Control: Mouse Spleen