

Product datasheet for **TA357945**

Tbce Rabbit Polyclonal Antibody

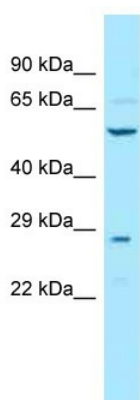
Product data:

Product Type:	Primary Antibodies
Applications:	WB
Reactivity:	Mouse
Host:	Rabbit
Clonality:	Polyclonal
Specificity:	Expected reactivity: Cow, Dog, Guinea Pig, Horse, Human, Mouse, Rabbit, Rat, Yeast, Zebrafish Homology: Cow: 100%; Dog: 93%; Guinea Pig: 100%; Horse: 100%; Human: 100%; Mouse: 100%; Rabbit: 100%; Rat: 100%; Yeast: 77%; Zebrafish: 92%
Formulation:	Liquid. Purified antibody supplied in 1x PBS buffer with 0.09% (w/v) sodium azide and 2% sucrose.
Concentration:	lot specific
Purification:	Affinity Purified
Conjugation:	Unconjugated
Storage:	For short term use, store at 2-8°C up to 1 week. For long term storage, store at -20°C in small aliquots to prevent freeze-thaw cycles.
Stability:	Shelf life: one year from despatch.
Predicted Protein Size:	59kDa
Gene Name:	tubulin-specific chaperone E
Database Link:	NP_848027 Entrez Gene 70430 Mouse Q8CIV8
Background:	Tbce is a rubulin-folding protein; it is involved in the second step of the tubulin folding pathway. Tbce seems to be implicated in the maintenance of the neuronal microtubule network. Tbce is involved in regulation of tubulin heterodimer dissociation.
Synonyms:	HRD; KCS; KCS1; pac2



[View online »](#)

Product images:



WB Suggested Anti-Tbce Antibody
Titration: 1.0 ug/ml
Positive Control: Mouse Liver