

Product datasheet for **TA357944**

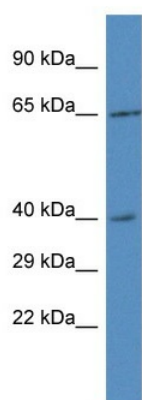
RRS1 Rabbit Polyclonal Antibody

Product data:

| | |
|-------------------------|--|
| Product Type: | Primary Antibodies |
| Applications: | WB |
| Reactivity: | Human |
| Host: | Rabbit |
| Clonality: | Polyclonal |
| Specificity: | Expected reactivity: Cow, Dog, Guinea Pig, Horse, Human, Mouse, Pig, Rabbit, Rat Homology: Cow: 93%; Dog: 85%; Guinea Pig: 93%; Horse: 100%; Human: 100%; Mouse: 86%; Pig: 100%; Rabbit: 85%; Rat: 100% |
| Formulation: | Liquid. Purified antibody supplied in 1x PBS buffer with 0.09% (w/v) sodium azide and 2% sucrose. |
| Concentration: | lot specific |
| Purification: | Affinity Purified |
| Conjugation: | Unconjugated |
| Storage: | For short term use, store at 2-8°C up to 1 week. For long term storage, store at -20°C in small aliquots to prevent freeze-thaw cycles. |
| Stability: | Shelf life: one year from despatch. |
| Predicted Protein Size: | 40kDa |
| Gene Name: | ribosome biogenesis regulator homolog |
| Database Link: | NP_055984 Entrez Gene 23212 Human Q15050 |
| Background: | RRS1 is involved in ribosome biogenesis. |
| Synonyms: | KIAA0112; RRR |



[View online »](#)

Product images:


WB Suggested Anti-RRS1 Antibody
 Titration: 1.0 ug/ml
 Positive Control: 293T Whole Cell RRS1 is supported by BioGPS gene expression data to be expressed in HEK293T