

Product datasheet for **TA357943**

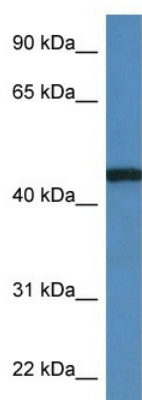
RRS1 Rabbit Polyclonal Antibody

Product data:

Product Type:	Primary Antibodies
Applications:	WB
Reactivity:	Human
Host:	Rabbit
Clonality:	Polyclonal
Specificity:	Expected reactivity: Cow, Dog, Human, Pig, Rat Homology: Cow: 86%; Dog: 86%; Human: 100%; Pig: 86%; Rat: 79%
Formulation:	Liquid. Purified antibody supplied in 1x PBS buffer with 0.09% (w/v) sodium azide and 2% sucrose.
Concentration:	lot specific
Purification:	Affinity Purified
Conjugation:	Unconjugated
Storage:	For short term use, store at 2-8°C up to 1 week. For long term storage, store at -20°C in small aliquots to prevent freeze-thaw cycles.
Stability:	Shelf life: one year from despatch.
Predicted Protein Size:	40kDa
Gene Name:	ribosome biogenesis regulator homolog
Database Link:	NP_055984 Entrez Gene 23212 Human Q15050
Background:	The function of this protein remains unknown.
Synonyms:	KIAA0112; RRR



[View online »](#)

Product images:

WB Suggested Anti-RRS1 Antibody
Titration: 1.0 ug/ml
Positive Control: MCF7 Whole Cell RRS1 is supported by BioGPS gene expression data to be expressed in MCF7