

Product datasheet for **TA357938**

Rela Rabbit Polyclonal Antibody

Product data:

Product Type:	Primary Antibodies
Applications:	WB
Reactivity:	Rat, Mouse
Host:	Rabbit
Clonality:	Polyclonal
Immunogen:	The immunogen is a synthetic peptide directed towards the middle region of Rat Rela
Specificity:	Expected reactivity: Cow, Dog, Guinea Pig, Horse, Human, Mouse, Rabbit, Rat, Zebrafish Homology: Cow: 100%; Dog: 100%; Guinea Pig: 100%; Horse: 100%; Human: 100%; Mouse: 100%; Rabbit: 85%; Rat: 100%; Zebrafish: 92%
Formulation:	Liquid. Purified antibody supplied in 1x PBS buffer with 0.09% (w/v) sodium azide and 2% sucrose. <i>Note that this product is shipped as lyophilized powder to China customers.</i>
Concentration:	lot specific
Purification:	Affinity Purified
Conjugation:	Unconjugated
Storage:	For short term use, store at 2-8°C up to 1 week. For long term storage, store at -20°C in small aliquots to prevent freeze-thaw cycles.
Stability:	Shelf life: one year from despatch.
Predicted Protein Size:	60kDa
Gene Name:	RELA proto-oncogene, NF-kB subunit
Database Link:	NP_954888 Entrez Gene 19697 Mouse Entrez Gene 309165 Rat Q7TQN4
Background:	Rela is a component of the NF-kappa B complex and is involved in transcriptional activation.
Synonyms:	MGC131774; NFKB3; p65



[View online »](#)

Product images:

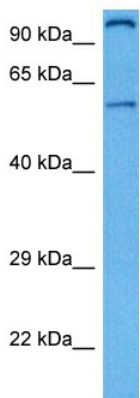


Host: Rabbit
Target Name: Rela
Sample Type: Rat Thymus lysates
Antibody Dilution: 1.0ug/ml



Host: Rabbit
Target Name: Rela
Sample Type: Mouse Testis Lysate
Antibody Dilution: 1.0µg/ml

Host: Rabbit
Target Name: RELA
Sample Tissue: Mouse Testis
Antibody Dilution: 1ug/ml



Host: Rabbit
Target Name: Rela
Sample Type: Mouse Testis Lysate
Antibody Dilution: 1.0 μ g/ml

Host: Mouse
Target Name: RELA
Sample Tissue: Mouse Testis
Antibody Dilution: 1 μ g/ml