

## Product datasheet for **TA357936**

### DNase gamma (DNASE1L3) Rabbit Polyclonal Antibody

#### Product data:

Product Type:	Primary Antibodies
Applications:	WB
Reactivity:	Human
Host:	Rabbit
Clonality:	Polyclonal
Specificity:	<b>Expected reactivity:</b> Human <b>Homology:</b> Human: 100%
Formulation:	Liquid. Purified antibody supplied in 1x PBS buffer with 0.09% (w/v) sodium azide and 2% sucrose.
Concentration:	lot specific
Purification:	Affinity Purified
Conjugation:	Unconjugated
Storage:	For short term use, store at 2-8°C up to 1 week. For long term storage, store at -20°C in small aliquots to prevent freeze-thaw cycles.
Stability:	Shelf life: one year from despatch.
Predicted Protein Size:	34kDa
Gene Name:	deoxyribonuclease I like 3
Database Link:	<a href="#">NP_004935</a> <a href="#">Entrez Gene 1776 Human</a> <a href="#">Q13609</a>
Background:	This gene encodes a member of the DNase family. The protein hydrolyzes DNA, is not inhibited by actin, and mediates the breakdown of DNA during apoptosis. Alternate transcriptional splice variants of this gene have been observed but have not been thoroughly characterized.
Synonyms:	DHP2; DNAS1L3; LS-DNase; LSD
Protein Families:	Druggable Genome



[View online »](#)

Product images:

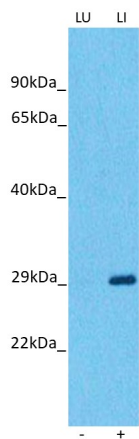


WB Suggested Anti-DNASE1L3 Antibody  
Titration: 1.0 ug/ml  
Positive Control: Placenta



Host: Rabbit  
Target Name: DNASE1L3  
Sample Type: MCF7 Cell Lysate  
Antibody Dilution: 1.0µg/ml

Host: Rabbit  
Target Name: DNASE1L3  
Sample Tissue: Human MCF7 Whole Cell  
Antibody Dilution: 1 ug/ml



Host: Rabbit  
 Target name: DNASE1L3  
 Positive control: ~25ug Human Liver (LI)  
 Negative control: ~25ug Human Lung (LU)  
 Antibody concentration: 3ug/ml

Host: Rabbit  
 Target: DNASE1L3  
 Positive control (+): Human liver (LI)  
 Negative control (-): Human lung (LU)  
 Antibody concentration: 3ug/ml