

## Product datasheet for **TA357924**

### CUL4A Rabbit Polyclonal Antibody

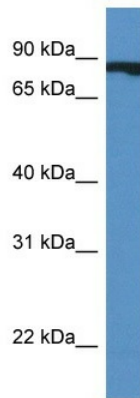
#### Product data:

Product Type:	Primary Antibodies
Applications:	IHC, WB
Reactivity:	Human
Host:	Rabbit
Clonality:	Polyclonal
Specificity:	<b>Expected reactivity:</b> Cow, Dog, Guinea Pig, Horse, Human, Mouse, Rabbit, Rat <b>Homology:</b> Cow: 100%; Dog: 92%; Guinea Pig: 100%; Horse: 100%; Human: 100%; Mouse: 100%; Rabbit: 100%; Rat: 100%
Formulation:	Liquid. Purified antibody supplied in 1x PBS buffer with 0.09% (w/v) sodium azide and 2% sucrose. <i>Note that this product is shipped as lyophilized powder to China customers.</i>
Concentration:	lot specific
Purification:	Affinity Purified
Conjugation:	Unconjugated
Storage:	For short term use, store at 2-8°C up to 1 week. For long term storage, store at -20°C in small aliquots to prevent freeze-thaw cycles.
Stability:	Shelf life: one year from despatch.
Predicted Protein Size:	88kDa
Gene Name:	cullin 4A
Database Link:	<a href="#">NP_001008895</a> <a href="#">Entrez Gene 8451 Human</a> <a href="#">Q13619</a>
Background:	CUL4A is the ubiquitin ligase component of a multimeric complex involved in the degradation of DNA damage-response proteins.
Synonyms:	CUL-4A; OTTHUMP00000018753
Protein Pathways:	Nucleotide excision repair, Ubiquitin mediated proteolysis



[View online »](#)

Product images:



WB Suggested Anti-CUL4A Antibody  
Titration: 1.0 ug/ml  
Positive Control: Fetal Heart

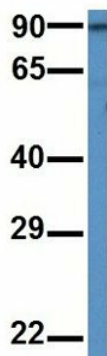
**CUL4A**



Rabbit Anti-CUL4A  
Sample Type: Human Fetal Liver  
Antibody Concentration: 1ug/mL

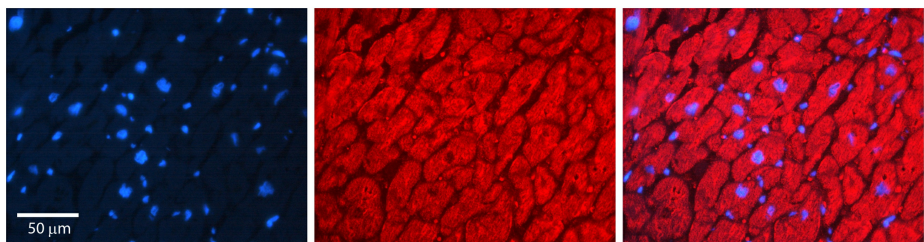
Host: Rabbit  
Target Name: CUL4A  
Sample Type: Human Fetal Liver  
Antibody Dilution: 1.0ug/ml

### CUL4A



Rabbit Anti-CUL4A  
 Sample Type: Human Fetal Lung  
 Antibody Concentration: 1ug/mL

Host: Rabbit  
 Target Name: CUL4A  
 Sample Type: Human Fetal Lung  
 Antibody Dilution: 1.0ug/ml



Rabbit Anti-CUL4A Antibody  
 Catalog Number: TA357924  
 Formalin Fixed Paraffin Embedded Tissue:  
 Human heart Tissue  
 Observed Staining: Cytoplasmic, nucleus  
 Primary Antibody Concentration: 1:100  
 Other Working Concentrations: N/A  
 Secondary Antibody: Donkey anti-Rabbit-Cy3  
 Secondary Antibody Concentration: 1:200  
 Magnification: 20X  
 Exposure Time: 0.5-2.0 sec