

Product datasheet for TA357922

Epha4 Rabbit Polyclonal Antibody

Product data:

Product Type:	Primary Antibodies
Applications:	IHC, WB
Reactivity:	Mouse
Host:	Rabbit
Clonality:	Polyclonal
Specificity:	Expected reactivity: Cow, Dog, Guinea Pig, Horse, Human, Mouse, Rabbit, Rat, Zebrafish Homology: Cow: 100%; Dog: 100%; Guinea Pig: 100%; Horse: 100%; Human: 100%; Mouse: 100%; Rabbit: 100%; Rat: 100%; Zebrafish: 83%
Formulation:	Liquid. Purified antibody supplied in 1x PBS buffer with 0.09% (w/v) sodium azide and 2% sucrose. <i>Note that this product is shipped as lyophilized powder to China customers.</i>
Concentration:	lot specific
Purification:	Affinity Purified
Conjugation:	Unconjugated
Storage:	For short term use, store at 2-8°C up to 1 week. For long term storage, store at -20°C in small aliquots to prevent freeze-thaw cycles.
Stability:	Shelf life: one year from despatch.
Predicted Protein Size:	110kDa
Gene Name:	Eph receptor A4
Database Link:	NP_031962 Entrez Gene 13838 Mouse Q03137
Background:	Epha4 is a receptor tyrosine kinase which binds membrane-bound ephrin family ligands residing on adjacent cells, leading to contact-dependent bidirectional signaling into neighboring cells.
Synonyms:	HEK8; OTTHUMP00000164185; SEK; TYRO1

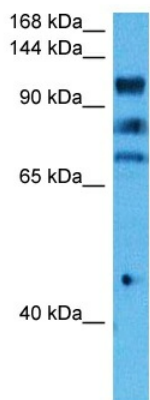


[View online »](#)

Product images:



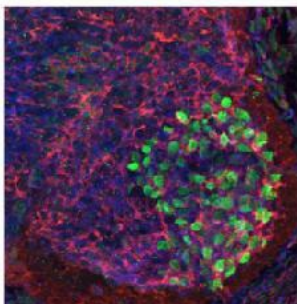
WB Suggested Anti-Epha4 Antibody
 Titration: 1.0 ug/ml
 Positive Control: Mouse Pancreas



Host: Rabbit
 Target Name: Epha4
 Sample Type: Mouse Brain Lysate
 Antibody Dilution: 1.0µg/ml

Host: Mouse
 Target Name: EPHA4
 Sample Tissue: Mouse Brain
 Antibody Dilution: 1 ug/ml

Epha4



Red: Epha4
Cyan: Nissl(Neurons)
Green: FoxP1 (lateral motor neurons)

See IHC 1 Data and Customer Feedback for more Information

Sample Type:

Embryonic mouse spinal cord

Primary Antibody Dilution:

1:1000

Secondary Antibody:

Anti-rabbit-Cy3

Secondary Antibody Dilution:

1:1000

Color/Signal Descriptions:

Red: Epha4 Cyan: Nissl(Neurons) Green: FoxP1 (lateral motor neurons)

Gene Name:

Epha4

Submitted by:

Joshua R. Sanes, Molecular and Cellular Biology,
Harvard University, 52 Oxford Street, Room 335,
Cambridge MA 02138, Phone: 617-496-8683, FAX:
617-495-0524, email: sanesj@mcb.harvard.edu